

Historic, Archive Document

Do not assume content reflects current scientific knowledge, policies, or practices.



73

LIBRARY
RESERVED

3 1951

U. S. Department of Agriculture

JOHN M. EISLER

Nurseries

Butler, Pa.

COMPLETE GARDEN AND ESTATE

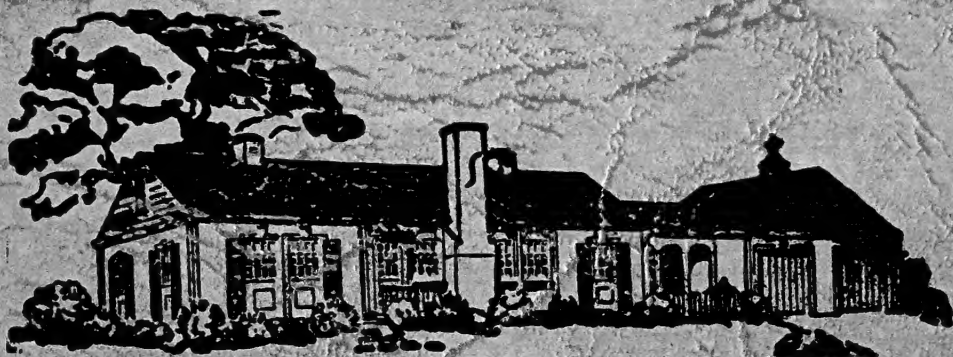
CONTRACTING



*Our services are available for small gardens
or entire estates — at moderate prices*



PRICE 1951 LIST



CONDITIONS OF SALE

The prices in this catalog cancel all previous prices and are subject to change without notice. All orders for stock are subject to prior sale.

GUARANTEE

This is governed by the Pennsylvania Nurserymen's Association Uniform Retail Replacement Agreement which is as follows: "Provided account is paid within thirty days and plants receive reasonable care, we will replace at one-half price of the plants, plus cost of planting, plants planted in the spring that fail to survive the following summer, or if planted in the fall, fail to leaf out the following spring."

Should we not have the same plants in stock, we reserve the right to give credit for an amount equal to one-half the cost of the plants lost, in other plants of your selection.

DELIVERY CHARGE

Certain items in this catalogue include all delivery costs prepaid to your home. These items are Mushroom Manure, Scott's Lawn Seed, Turf Builder, Eisler's Humus, Lawn Mowers, Garden Tractors, Strawberry Plants, etc. Prices on general Nursery Stock does not include delivery, except on large truck load orders to be delivered within fifty miles.

GUARANTEE OF GENUINENESS

All plant materials are warranted by us to be true to name and in a healthy condition. If any stock proves untrue to variety name or to our description under which sold, we will, upon proper evidence, replace the stock at no cost or refund the full purchase price. We shall in no case be responsible for any sum greater than the original purchase price.

TERMS

To those having established credit, we are pleased to extend our regular thirty-day terms. Orders for C.O.D. shipments must be accompanied by at least one-third of the amount of the order.

We sell tractors, Nursery Stock, Power Mowers, and Landscape Jobs on a twelve (12) monthly payment plan. If interested, please ask for details.

JOHN M. EISLER NURSERIES

Butler Office
219 East Pearl Street

Phones:
Butler 33-600
Butler 54-256

Evening Calls

John M. Eisler — Prospect 2-666

Cy Borland — Prospect 2-297

Joe Thomas — Connoquenessing 2-213

MEMBER OF

AMERICAN ASSOCIATION OF NURSERYMEN
PENNSYLVANIA NURSERYMEN'S ASSOCIATION
WESTERN PENNSYLVANIA NURSERYMEN'S ASSOCIATION
NATIONAL LANDSCAPE NURSERYMEN'S ASSOCIATION

Please Address All Correspondence to Our Butler Office

**EVERGREEN SHRUBS and AZALEAS
(RHODODENDRONS)**

We take great pride in our list of hardy Azaleas and Rhododendrons which we have growing in our Prospect, Butler County Nurseries. We have the best selection of hardy varieties to be found within hundreds of miles in any direction. A great many have been imported directly from Holland and have been acclimated to our winters. These are truly aristocrats. We do not attempt to grow varieties that are not perfectly hardy with us.

AZALEAS:	Sizes Available	Description
Aida—12-15" - 15-18"		double deep pink
Altaclarensis—12-15" - 15-18"		large orange-yellow
Anna Louise—12-15" - 15-18" - 18-24"		vermillion orange
Apelles—15-18" - 18-24"		salmon pink
Arborescens—2'-3'		fragrant late white flowers
Bouquet de Flore—15-18" - 18-24"		large salmon red
Chevalier de Really—12-15" - 15-18"		light yellow
Coccinea speciosa—12-15" - 15-18" - 18-24"		fragrant brilliant orange
Comte papadopoli—12-15" - 15-18"		salmon rose
Comete de Quincy—12-15" - 15-18"		yellow
Corneille—15-18" - 18-24"		apple blossom pink
Daviesi—12-15" - 15-18" - 18-24" - 24-30"		fragrant large cream
Edward Henry—15-18" - 18-24"		salmon
Frans van der Bom—12-15" - 15-18" - 18-24"		burnt orange
General Trauff—12-15" - 15-18" - 18-24"		yellow tinted rose
Gloria Mundi—12-15"		vermillion red
Goldback—12-15" - 15-18"		yellow orange
Grandeur Triomphante—15-18" - 18-24"		violet red
Hortulanus witte—12-15" - 15-18" - 18-24"		orange-yellow
Hugo Hardyzer—15-18" - 18-24"		coral
Hugo Koster—12-15" - 15-18" - 18-24"		gold orange
Ignaea nova—12-15" - 15-18" - 18-24"		tomato red
Kaempferi hybrid—15-18"		brilliant orange red
Koster Brilliant Red—12-15" - 15-18" - 18-24"		glowing orange red
*Ledifolia alba—15-18"		white
Lutea—18-24"		clear yellow
Narcissiflora—12-15" - 15-18" - 18-24"		double fragrant yellow
Nicholas Beets—12-15"-15-18"-18-24"-24-30"-30-36"		Orange yellow
Perfecta—18-24" - 24-30"		coppery salmon
Raphael de Smet—12-15" - 15-18" - 18-24"		double pale pink
Reine Louise—12-15" - 15-18"		fragrant orange
Sang de Gentbrugge—12-15" - 15-18" - 18-24"		brilliant red
Schlippenbachi—12-15"		rose pink
T. J. Seidel—12-15" - 15-18" - 18-24"		burnt orange

Prices on above Azaleas all dug with a ball of earth and roots burlapped.

* Azalea ledifolia alba—5.50

	1 to 9 Each	10 & up Each
12-15" B&B.....	3.50	3.25
15-18" B&B.....	4.50	4.00
18-24" B&B.....	5.50	5.00
24-30" B&B.....	8.00	7.50
30-36" B&B.....	10.00	9.00

**EVERGREEN SHRUBS and AZALEA
(RHODODENDRONS)**

	1 to 9 Each	10 & up Each
AZALEA nudiflora—6'		Pinxterbloom
Our native pink Azalea. Perfectly hardy.		
2 to 3 ft. B&B	6.00	5.50
3 to 4 ft. B&B	7.00	6.50
4 to 5 ft. B&B heavy.....	10.00	9.00
5 to 6 ft. B&B heavy.....	12.50	11.50
COTONEASTER divaricata—5'		Spreading Cotoneaster
Brilliant red berries. Spreading growth.		
18 to 24 in. B&B	3.00	2.75
2 to 3 ft. B&B	4.00	3.50
3 to 4 ft. B&B	5.00	4.50
COTONEASTER horizontalis—3'		Rock Spray
Bright red berries and flat horizontal branches make it ideally suited for planting in rock gardens.		
4 in. pots	3.00	2.50
COTONEASTER horizontalis wilsoni—5'		Wilson Cotoneaster
A vigorous grower. Bright red fruit.		
18 to 24 in. B&B	3.00	2.50
2 to 3 ft. B&B	4.00	3.50
3 to 4 ft. B&B	5.00	4.50
DAPHNE mezereum—3'		February Daphne
Small fragrant flowers in very early Spring.		
12 to 15 in.	4.50	4.00
ILEX crenata bullata—10'		Convexleaf Japanese Holly
Grows and looks like Boxwood. Small glossy green leaves. Makes good evergreen hedge.		
2 in. pots50	.45
6 to 12 in. B&B	2.00	1.75
12 to 15 in. B&B	3.50	3.00
15 to 18 in. B&B	4.50	4.00
18 to 24 in. B&B	6.00	5.50
ILEX crenata microphylla—10'		Littleleaf Japanese Holly
Small evergreen leaves with a graceful habit of growth.		
2 in. pot50	.45
15 to 18 in. B&B	4.50	4.00
18 to 24 in. B&B	6.00	5.50
24 to 30 in. B&B	8.00	7.50
ILEX crenata rotundifolia—10'		Roundleaf Japanese Holly
Our best of evergreen hollies. Makes beautiful hedge, or good specimen plant. Use in place of Boxwood.		
2½ in. pots50	.45
15 to 18 in. B&B	4.50	4.00
18 to 24 in. B&B	5.50	5.00
24 to 30 in. B&B	6.50	6.00
ILEX glabra—8'		Inkberry
Round evergreen shrub producing black berries in fall.		
2 in. pots50	.45
15 to 18 in. B&B	4.00	3.50
18 to 24 in. B&B	5.00	4.50
24 to 30 in. B&B	6.00	5.50
30 to 36 in. B&B	7.50	7.00
36 to 42 in. B&B	10.00	

**EVERGREEN SHRUBS and AZALEA
(RHODODENDRONS)**

	1 to 9 Each	10 & up Each
ILEX opaca—40'	American Holly	
This is the native holly of the South. We have a strain developed in our nurseries that has been hardy with us for over ten winters. Must be planted in pairs—male and female to produce berries.		
24 to 30 in.	7.00	6.50
30 to 36 in.	9.00	8.00
3 to 4 ft.	11.00	10.00
4 to 5 ft.	15.00	14.00
5 to 6 ft.	20.00	
6 to 7 ft.	25.00	
KALMIA latifolia—8'	Mountain Laurel	
Our state flower. A lovely evergreen shrub with pink and white flowers in May and June.		
10 to 12 in. B&B	1.50	1.25
12 to 15 in. B&B	2.50	2.25
15 to 18 in. B&B	3.25	3.00
18 to 24 in. B&B	4.00	3.50
24 to 30 in. B&B	5.00	4.50
30 to 36 in. B&B	6.50	6.00
3 to 4 ft. B&B	9.00	8.50
LEUCOTHOE catesbaei—4'	Drooping Leucothoe	
It loves shaded nooks. Beautiful purple, bronze and crimson glow of foliage in fall. White flowers in April.		
12 to 15 in. B&B	3.00	2.75
15 to 18 in. B&B	4.00	3.75
18 to 24 in. B&B	5.50	5.00
MAHONIA aquifolium—4'	Oregon Grape	
Waxy leaves like holly. Yellow flowers.		
18 to 24 in. B&B	4.50	4.00
PIERIS japonica—10'	Japanese Andromeda	
Handsome tassels of bloom similar to lily-of-valley. Rich fall color.		
2¼ in. pots50	.45
12 to 15 in. B&B	4.50	4.25
15 to 18 in. B&B	5.50	5.25
18 to 24 in. B&B	7.50	7.00
24 to 30 in. B&B	10.00	9.50
PYRACANTHA coccinea—10'	Scarlet Firethorn	
Beautiful evergreen foliage with clusters of orange berries in fall.		
2¼ in. pots40	.35
3 in. pots	1.00	.90
4 in. pots	2.00	1.75
5 in. pots	3.00	2.75
PYRACANTHA coccinea lalandi—6'	Laland Firethorn	
Noted for its vivid winter color.		
5 in. pots	4.00	3.50

RHODODENDRON — HYBRID

1 to 9 10 & up
Each Each

These broadleaf evergreens lead the plant world in brilliance and richness. They have a permanent green foliage with astonishing blooms during the last of May and early June. A true aristocrat.

Named Varieties	Sizes Available	Description
Atrosanguineum	—12-15" - 15-18" - 18-24"	Dark Red
Bicolor	—12-15" - 15-18"	Reddish Violet
C. S. Sargeant	—12-15"	Bright Red
Caractacus	—12-15"	Purple Crimson
Charles Bagley	—12-15" - 15-18"	Bright Red
Dr. Dresselhuys	—12-15"	Analine Red
Dr. V. H. Rutgers	—12-15" - 15-18" - 18-24"	Warm Red
Everestianum	—12-15"	Lavender
Fastuosum	—12-15"	Blue Violet
F. D. Godman	—12-15" - 15-18" - 18-24"	Reddish Magenta
General Grant	—12-15" - 15-18"	Purple Red
Giganteum	—18-24" - 24-30" - 30-36"	Deep Rose
Lee's Dark Purple	—12-15" - 15-18" - 18-24"	Blue Purple
Madame Carvalho	—18-24" - 24-30"	White
Madame Masson	—12-15" - 15-18"	White
Parson's Gloriosum	—12-15" - 15-18" - 18-24" - 24-30"	Orchard Blush
Pelopidas	—12-15" - 15-18"	Cherry Red
Pres. Lincoln	—12-15" - 15-18" - 18-24" - 24-30" - 30-36"	Purple Rose
Purpureum Elegans	—12-15" - 15-18" - 18-24"	Purple
Roseum Elegans	—12-15" - 15-18" - 18-24" - 24-30" - 30-36"	Lavender Rose
Van de Hoop	—12-15" - 15-18" - 18-24"	Carmine Pink
Van Weerden	—12-15"	Crimson

Prices On All Varieties of Hybrid Rhododendrons

12 to 15 in. B&B	5.00	4.50
15 to 18 in. B&B	7.50	7.00
18 to 24 in. B&B	10.00	9.00
24 to 30 in. B&B	12.50	11.00
30 to 36 in. B&B	16.00	15.00

RHODODENDRON carolinianum—6' Carolina Rhododendron

Delicate apple-blossom pink flowers bloom on a bush with small glossy green leaves.

18 to 24 in. B&B	6.00	5.75
2 to 3 ft. B&B	8.50	8.00
3 to 4 ft. B&B	10.00	9.50

RHODODENDRON catawbiense—8' Catawba Rhododendron

Beautiful large green leaves. Large lavender to red blooms in May.

18 to 24 in. B&B	5.50	5.00
2 to 3 ft. B&B	7.50	7.00
3 to 4 ft. B&B	10.00	9.50
4 to 5 ft. B&B	12.50	12.00

RHODODENDRON maximum Rosebay Rhododendron

Our native Rhododendron with large waxy leaves. Blush pink flowers in late June and July.

18 to 24 in. B&B	5.00	4.50
2 to 3 ft. B&B	6.00	5.50
3 to 4 ft. B&B	7.50	7.00
4 to 5 ft. B&B	10.00	9.50
5 to 6 ft. B&B	14.00	13.50

EVERGREEN

	1 to 9	10 & up
	Each	Each

We do our own propagating at our No. 1 Nursery and can assure you of good sturdy evergreens that will endure the winters of Western Pennsylvania.

ABIES concolor—100'

White Fir

Silvery green long flat needles. Hardy pyramidal specimen tree.

3 to 4 ft. B&B	9.00	8.00
4 to 5 ft. B&B	12.50	10.00
7 to 8 ft. B&B	25.00	
8 to 9 ft. B&B	30.00	
9 to 10 ft. B&B	35.00	
10 to 12 ft. B&B	45.00	
12 to 14 ft. B&B	60.00	
14 to 16 ft. B&B	80.00	

ABIES fraseri—50'

Fraser Fir

Silver green on underside of needles.

8 to 10 ft. B&B	25.00	
10 to 12 ft. B&B	30.00	
12 to 14 ft. B&B	40.00	

CHAMAECYPARIS pisifera filifera—50'

Thread Sawara Falsecypress

Pale green thread-like foliage on drooping branches.

2 to 3 ft. B&B	5.00	4.50
3 to 4 ft. B&B	7.50	6.50

CHAMAECYPARIS pisifera fillifera aurea—10'

Golden Thread Falsecypress

Gorgeous golden thread-like leaves on drooping branches.

15 to 18 in. B&B	4.00	
------------------------	------	--

CHAMAECYPARIS pisifera plumosa

Plume Sawara Falsecypress

Soft feathery pyramids of fern-like foliage.

2 to 3 ft. B&B	5.00	4.50
3 to 4 ft. B&B	7.50	6.50
4 to 5 ft. B&B	10.00	9.00

We also have some 5 to 10 ft. specimens.

Price on application.

CHAMAECYPARIS pisifera plumosa aurea—30'

Goldenplume Sawara Falsecypress

Soft golden fern-like foliage.

3 ft. B&B	6.00	
4 ft. B&B	8.00	
5 ft. B&B	10.00	
6 ft. B&B	12.50	

CHAMAECYPARIS pisifera squarrosa veitchi

Moss Falsecypress

A billowy pyramid of soft violet-gray foliage.

5 ft. B&B	10.00	
6 ft. B&B	12.50	
7 ft. B&B	15.00	

JUNIPER chinensis pfitzeriana—6'

Pfitzer Juniper

Handsome plume like spreading branches. Withstands city conditions best of all Junipers.

2¼ in. pots50	.45
12 to 15 in. spread B&B	3.00	2.50
15 to 18 in. spread B&B	4.00	3.50

EVERGREEN

	1 to 9 Each	10 & up Each
18 to 24 in. spread B&B	5.00	4.50
24 to 30 in. spread B&B	6.00	5.50
30 to 36 in. spread B&B	8.00	7.50
3 to 4 ft. spread B&B	12.00	
4 to 5 ft. spread B&B	20.00	
5 to 6 ft. spread B&B	30.00	
6 to 7 ft. spread B&B	40.00	
JUNIPER communis hibernica—15'		Irish Juniper
Rigidly columnar. Bluish green.		
2 in. pots50	.45
2 to 3 ft. B&B	3.50	3.00
3 to 4 ft. B&B	5.00	4.50
JUNIPER horizontalis plumosa—2'		Andorra Creeping Juniper
Bright green low spreading evergreen that turns purple in fall. Excellent ground cover.		
2 in. pots50	.45
12 to 15 in. B&B	3.00	2.50
15 to 18 in. B&B	3.50	3.00
18 to 24 in. B&B	4.00	3.50
24 to 30 in. B&B	5.00	4.50
3 to 4 ft. B&B	7.50	7.00
JUNIPER squamata meyeri—6'		Meyer Juniper
Unusual foliage of silvery blue hue.		
12 to 15 in. B&B	2.50	2.25
JUNIPERUS virginiana canaerti		Canaert Cedar
This is by far the best of the pyramidal Junipers. It has deep green foliage and grows slowly. Slender and graceful. Pro- duces steel blue berries in fall.		
3 to 3½ ft. B&B	7.50	7.00
3½ to 4 ft. B&B	8.50	8.00
5 to 6 ft. B&B	15.00	14.00
6 to 7 ft. B&B	18.00	17.00
PICEA abies (excelsa)—75'		Norway Spruce
Fast growing. Short needles. Used extensive- ly for Christmas trees.		
2½ to 3 ft. B&B	4.50	4.00
3 to 4 ft. B&B	6.00	5.50
9 to 10 ft. B&B	25.00	
10 to 12 ft. B&B	35.00	
— For larger ones up to 20 feet ask for prices —		
PICEA glauca densata—60'		Black Hill's Spruce
Exceptionally shapely with dense silvery fo- liage. Grows slower and fuller than Norway.		
3 to 4 ft. B&B	6.50	6.00
4 to 5 ft. B&B	9.00	8.00
5 to 6 ft. B&B	12.00	11.00
10 to 12 ft. B&B	40.00	
12 to 14 ft. B&B	55.00	
14 to 16 ft. B&B	75.00	
PICEA omorika—50'		Serbian Spruce
A beautiful spruce with silvery foliage. Stately and graceful.		
2 to 2½ ft. B&B	6.50	6.00
10 to 12 ft. B&B	50.00	47.50
12 to 14 ft. B&B	65.00	60.00

EVERGREENS

	1 to 9 Each	10 & up Each
PICEA pungens—60'	Colorado Green Spruce	
A good lawn tree. Green all year. Compact grower.		
3 to 4 ft. B&B	7.50	7.00
4 to 5 ft. B&B	9.00	8.00
5 to 6 ft. B&B	10.00	9.00
6 to 8 ft. B&B	17.50	16.00
8 to 10 ft. B&B	30.00	
PICEA pungens glauca—60'	Blue Colorado Spruce	
Rich steel blue needles. Horizontal branches.		
3 ft. B&B	10.00	
4 ft. B&B	15.00	
5 ft. B&B	20.00	
PICEA pungens kosteriana—50'	Koster Blue Spruce	
Bluest of Blue Spruces. An aristocrat.		
12 to 14 ft. B&B	100.00	
14 to 16 ft. B&B	125.00	
16 to 18 ft. B&B	150.00	
PINUS cembra—70'	Swiss Stone Pine	
Slow growing compact, pyramidal with bluish-green needles.		
18 to 24 in. B&B	8.00	
24 to 30 in. B&B	10.00	
30 to 36 in. B&B	12.50	
PINUS mugo mughus	Dwarf Mountain Pine	
Low, compact, round evergreen. Erect little candles of new growth in May and June.		
15 to 18 in. spread B&B	4.50	4.00
18 to 24 in. spread B&B	5.50	5.00
24 to 30 in. spread B&B	7.00	6.50
30 to 36 in. spread B&B	9.00	8.50
3 to 3½ ft. spread B&B	12.50	11.00
3½ to 4 ft. spread B&B	17.50	
4 to 5 ft. spread B&B	25.00	
5 to 6 ft. spread B&B	35.00	
PINUS nigra—75'	Austrian Pine	
Long deep green needles. Hardy and dignified.		
2 to 3 ft. B&B	5.00	4.50
3 to 4 ft. B&B	7.50	7.00
4 to 5 ft. B&B	11.00	10.00
5 to 6 ft. B&B	15.00	14.00
6 to 8 ft. B&B	22.00	20.00
8 to 9 ft. B&B	30.00	
9 to 10 ft. B&B	40.00	
PINUS resinosa—50'	Red Pine	
Long green soft needles. One of best pines.		
2 to 3 ft. B&B	5.00	4.50
3 to 4 ft. B&B	7.50	7.00
4 to 5 ft. B&B	11.00	10.00
5 to 6 ft. B&B	15.00	14.00
(Prices on large 20 to 30 ft. ones on application)		
PINUS strobus—100'	White Pine	
Our native white pine. Soft green foliage, noble form.		
10 to 12 ft. B&B	45.00	

EVERGREENS

	1 to 9 Each	10 & up Each
TAXUS cuspidata—10'		
Japanese Spreading Yew		
Most dependable spreading Evergreen.		
Dark green foliage with red berries in fall.		
2 in. pots50	.45
12 to 15 in. spread B&B	3.00	2.75
15 to 18 in. spread B&B	5.50	5.00
18 to 24 in. spread B&B	7.00	6.50
24 to 30 in. spread B&B	9.00	8.00
30 to 36 in. spread B&B	14.00	
36 to 42 in. spread B&B	18.00	
3½ to 4 ft. spread B&B	22.00	
5 to 6 ft. spread B&B	45.00	
6 to 7 ft. spread B&B	60.00	
7 to 8 ft. spread B&B	80.00	
TAXUS cuspidata capitata—25'		
Upright Japanese Yew		
Deep green foliage. Pyramidal growth. Red Berries in Fall.		
2¼ in. pots50	.45
15 to 18 in. B&B	6.50	6.00
18 to 24 in. B&B	7.50	7.00
24 to 30 in. B&B	8.50	8.00
30 to 36 in. B&B	12.50	
3 to 3½ ft. B&B	15.00	
3½ to 4 ft. B&B	20.00	
4 to 4½ ft. B&B	25.00	
4½ to 5 ft. B&B	32.50	
5 to 5½ ft. B&B	37.50	
5½ to 6 ft. B&B	42.50	
6 to 7 ft. B&B	50.00	
7 to 8 ft. B&B	60.00	
TAXUS cuspidata nana—6'		
Dwarf Japanese Yew		
Slow growing. Dense dark green foliage.		
2¼ in. pots50	.45
6 to 12 in. B&B	4.00	3.50
12 to 15 in. B&B	6.00	5.50
15 to 18 in. B&B	7.50	7.00
18 to 24 in. B&B	10.00	9.00
36 to 42 in. B&B	25.00	
TAXUS hunnewelliana		
Hunnewell Yew		
2¼ in. pots50	.45
12 to 15 in. B&B	3.00	2.75
15 to 18 in. B&B	5.50	5.00
18 to 24 in. B&B	7.50	7.00
24 to 30 in. B&B	10.00	9.50
30 to 36 in. B&B	15.00	14.00
TAXUS intermedia—12'		
Hybrid Yew		
Hybrid between baccata and taxus cuspidata.		
2 in. pots50	.45
15 to 18 in. B&B	5.50	5.00
18 to 24 in. B&B	7.50	7.00
24 to 30 in. B&B	10.00	9.50
TAXUS media browni—10'		
Brown's Yew		
Deep green heavy foliage. More upright than cuspidata.		
2 in. pots50	.45
18 to 24 in. B&B	8.00	7.50

EVERGREENS

	1 to 9 Each	10 & up Each
TAXUS media columnaris	Columnar Yew	
Heavy dark green foliage. Grows in a wide column.		
6 to 12 in. B&B	1.50	1.35
12 to 15 in. B&B	3.50	3.25
15 to 18 in. B&B	5.00	4.50
24 to 30 in. B&Bheavy.....	10.00	9.50
TAXUS media hatfieldi—10'	Hatfield Yew	
Compact cone shaped bush. Similar to hicksi.		
6 to 12 in. B&B	1.50	1.35
12 to 15 in. B&B	3.00	2.75
18 to 24 in. B&B	6.00	5.50
24 to 30 in. B&B	8.00	7.50
30 to 36 in. B&B	10.00	9.00
TAXUS media hicksi—12'	Hick's Yew	
Makes beautiful evergreen hedge. Deep green foliage covered with red berries in fall. One of the best.		
2 in. pots45	.40
6 to 12 in. B&B	1.50	1.35
12 to 15 in. B&B	3.00	2.75
15 to 18 in. B&B	3.75	3.50
18 to 24 in. B&B	6.00	5.50
24 to 30 in. B&B	8.00	7.50
30 to 36 in. B&B	10.00	9.00
36 to 42 in. B&B	14.00	13.00
42 to 48 in. B&B	18.00	17.00
THUJA occidentalis compacta—4'	Compact Arborvitae	
Bright green, early globular.		
18 to 24 in. B&B	3.50	3.00
THUJA occidentalis globosa—3'	Globe Arborvitae	
Globes of bright green dense foliage.		
15 to 18 in. B&B	3.50	3.00
THUJA occidentalis hoveyi—8'	Hovey Golden Arborvitae	
Oval in shape. Bright green foliage.		
2 in. pots50	.45
8 to 12 in. B&B	1.50	1.35
24 in. B&B	4.50	4.00
THUJA occidentalis pyramidalis—25'	Pyramidal Arborvitae	
Narrow pyramidal bright green evergreen.		
18 to 24 in. B&B	3.00	2.75
24 to 30 in. B&B	4.00	3.50
30 to 36 in. B&B	5.00	4.50
3 to 3½ ft. B&B	6.00	5.50
3½ to 4 ft. B&B	7.00	6.50
4 to 5 ft. B&B	9.00	8.00
5 to 6 ft. B&B	12.00	11.00
6 to 7 ft. B&B	15.00	14.00
7 to 8 ft. B&B	18.00	17.00
THUJA occidentalis wareana—15'	Ware Arborvitae	
Broad pyramid with rich deep blue-green foliage.		
15 to 18 in. B&B	3.00	2.50
18 to 24 in. B&B	4.00	3.50
24 to 30 in. B&B	5.00	4.50

EVERGREENS

	1 to 9 Each	10 & up Each
TSUGA canadensis—75'	Canada Hemlock	
An evergreen of grace and dignity. May be left growing for naturalistic beauty or sheared into formal shapes. A native of Pennsylvania and our State tree.		
15 to 18 in. B&B	2.50	2.25
18 to 24 in. B&B	3.50	3.00
24 to 30 in. B&B	5.00	4.50
30 to 36 in. B&B	6.00	5.50
3 to 4 ft. B&B	8.00	7.50
4 to 5 ft. B&B	12.00	
5 to 6 ft. B&B	16.00	
6 to 7 ft. B&B	22.00	
10 to 12 ft. B&B	60.00	
12 to 14 ft. B&B	75.00	
14 to 16 ft. B&B	90.00	
16 to 18 ft. B&B	110.00	
18 to 20 ft. B&B	140.00	
TSUGA caroliniana—50'	Carolina Hemlock	
Dark green graceful foliage.		
7 to 8 ft. B&B	30.00	
8 to 9 ft. B&B	40.00	
9 to 10 ft. B&B	50.00	
TSUGA sieboldi—36'	Sieboldi Hemlock	
Slow growing. Compact. Dark green foliage.		
3 to 4 ft. B&B	20.00	
4 to 5 ft. B&B	25.00	

DECIDUOUS SHRUBS

ACANTHOPANAX sieboldianus—8'	Five-leaved Aralia	
Glossy green foliage. Excellent for hedges in full sun or dense shade. Thorns about $\frac{3}{8}$ in.		
18 to 24 in.75	.65
2 to 3 ft.90	.80
3 to 4 ft.	1.25	1.10
ACER ginnala—15'	Amur Maple	
A shrub maple producing red fruit in July. Makes a nice specimen shrub when planted singly.		
5 to 6 ft. B&B	5.00	4.75
6 to 7 ft. B&B	7.00	6.50
8 to 10 ft. B&B	10.00	9.00
ARONIA arbutifolia—6'	Red Chokeberry	
Attractive little shrubs with white flowers, red fruits and autumn color.		
12 to 18 in.65	.60
2 to 3 ft.	1.00	.90

BENZOIN aestivale

(See Lindera)

BERBERIS erecta—5'	Truehedge Columberry	
Similar to Japanese Barberry except narrow upright growth.		
12 to 15 in.60	.55
15 to 18 in.75	.60
18 to 24 in. (65.00 per 100)	1.00	.75
24 to 30 in. (75.00 per 100)	1.25	.90
30 to 36 in.	1.50	1.10

DECIDUOUS SHRUBS

	1 to 9 Each	10 & up Each
BERBERIS mentorensis Quite hardy. Semi-evergreen. 18 to 24 in.	Mentor	Barberry
	1.25	
BERBERIS thunbergi—6' Used mainly for hedges. Foliage green turning red in fall with red berries. Small thorns. 12 to 15 in. (20.00 per 100)	Japanese	Barberry
15 to 18 in. (30.00 per 100)35	.28
18 to 24 in. (40.00 per 100)45	.35
BERBERIS thunbergi atropurpurea—6' A red leaf barberry all season when planted in full sun. Red berries in fall. 12 to 15 in. (40.00 per 100)	Redleaf	Japanese Barberry
15 to 18 in. (50.00 per 100)50	.45
18 to 24 in. (60.00 per 100)60	.55
BERBERIS thunbergi minor—2' A dwarf barberry suitable for edging and low hedge. 9 to 12 in. (40.00 per 100)	Box	Barberry
12 to 15 in.70	.65
BUDDLEIA—6' Long flower spikes from July until October. Attractive to butterflies.	Butterfly	Bush

VARIETIES

Charming	Deep Lavender
Dubonnet	Dark Wine Shade
Ile de France	Claret Purple
White Bouquet	Pure White
Pink Dawn	Delicate Pink
Empire Blue	Rich Blue
Royal Red	Beautiful Red
Orchid Beauty	Orchid Lavender

Prices On All Varieties

Field grown clumpsheavy.....	1.00	.90
CALLICARPA dichotoma purpurea—6' Tiny pink flowers in August followed by charming purple berries in October in great abundance. 12 to 18 in.	Chinese	Beautyberry
18 to 24 in.65	.60
2 to 3 ft.90	.80
CALYCANTHUS floridus—5' Old fashioned shrub sometimes called Strawberry Shrub. Brownish-red spicy fragrant flowers. Leaves have spicy odor. 18 to 24 in.	Sweetshrub	
2 to 3 ft.	1.25	1.10
3 to 4 ft.90	.80
4 to 5 ft.	1.00	.90
5 to 6 ft.	1.50	1.35
CARAGANA arborescens—12' A bright cheerful shrub with masses of yellow flowers in June and feathery foliage. 2 to 3 ft.	Siberian	Peashrub
	.90	.80
CEPHALANTHUS occidentalis—6' Creamy white flowers like buttons in late summer. 18 to 24 in.	Button	Bush
	.90	.80

DECIDUOUS SHRUBS

	1 to 9 Each	10 & up Each
CHAENOMELES japonica—6' Japanese Quince		
Scarlet-red flowers in April. Called Firebush by many. Small yellow quinces.		
12 to 15 in.65	.60
15 to 18 in.80	.75
18 to 24 in.	1.00	.90
2 to 3 ft.	1.25	1.10
CHAENOMELES japonica pygmaea—3' Dwarf Japanese Quince		
A dwarf form Japanese Quince.		
10 to 12 in.75	.65
CHAENOMELES lagenaria crimson beauty Red Flowering Japanese Quince		
Beautiful glowing vivid red flowers in early Spring.		
15 to 18 in.	1.75	1.60
18 to 24 in.	2.00	1.75
CHIONANTHUS virginicus—30' White Fringetree		
Feathery white flowers in May and June. Blue fruit in Autumn.		
2 to 3 ft.	1.75	1.50
3 to 4 ft.	2.50	2.25
4 to 5 ft.	3.00	2.75
CORNUS alba sibirica—10' Coral Dogwood		
White flowers in May. White berries in September. Noted for its brilliant red stems and twigs in winter.		
12 to 18 in.65	.60
18 to 24 in.80	.70
2 to 3 ft.	1.00	.90
CORNUS racemosa (paniculata)—15' Gray Dogwood		
White flowers in June with White berries in September.		
18 to 24 in.90	.80
4 to 5 ft.	1.50	1.25
5 to 6 ft.	1.75	1.50
6 to 8 ft.	2.50	2.25
CORNUS stolonifera—10' Redosier Dogwood		
Red stems and twigs. Attractive to birds. White flowers.		
18 to 24 in.90	.80
4 to 5 ft.	1.50	1.25
5 to 6 ft.	2.00	1.75
CORNUS stolonifera flaviramea—8' Goldentwig Dogwood		
Bright yellow stems and twigs. White flowers in May followed by white berries in September.		
18 to 24 in.75	.65
2 to 3 ft.	1.00	.90
3 to 4 ft.	1.25	1.10
CORYLUS americana—10' American Filbert		
Our native hazelnut. Has good sturdy foliage.		
18 to 24 in.	1.00	.90
3 to 4 ft.	1.50	1.25
CONTINUS coggygia—15' Common Smoketree		
Shrub of round bushy habit. Covered with abundant purple plumes in fall.		
2 to 3 ft.	1.50	1.35

DECIDUOUS SHRUBS

	1 to 9 Each	10 & up Each
COTONEASTER acutifolia—12' Peking Cotoneaster		
Upright type with black berries.		
18 to 24 in.	1.00	.90
3 to 4 ft.	1.50	1.35
4 to 5 ft.	2.00	1.75
DEUTZIA gracilis—3' Slender Deutzia		
A good small plant. White flowers profusely in May. Best planted in protected area.		
15 to 18 in.	1.00	.90
DEUTZIA lemoinei—5' Lemoine Deutzia		
Abundant large white flowers in May. Hardy.		
18 to 24 in.90	.80
DEUTZIA scabra—7' Pride of Rochester Deutzia		
Attractive white blossoms in June. Upright grower.		
12 to 18 in.65	.60
18 to 24 in.90	.80
2 to 3 ft.	1.10	1.10
3 to 4 ft.	1.25	1.15
ELAEAGNUS angustifolia—20' Russian Olive		
Leaves dull green above, silvery on underside. Fragrant yellow flowers in June.		
2 to 3 ft.	1.00	.90
3 to 4 ft.	1.50	1.25
4 to 5 ft.	2.00	1.75
5 to 6 ft.	2.50	2.25
EUONYMUS alatus—10' Winged Euonymus		
A really good shrub for sun or shade. Cork bark, brilliant coloration in fall. Orange-red berries.		
3 to 4 ft.	2.50	2.40
8 to 10 ft. B&Bheavy.....	15.00	
8 to 10 ft. B&Bheavy.....	20.00	
EUONYMUS atropurpureus—15' Burning Bush		
Bright crimson berries in fall.		
2 to 3 ft.	1.00	.90
EUONYMUS europaeus—15' European Burning Bush		
Beautiful pink and red fruit and red foliage in fall. A choice large shrub with irregular habits.		
18 to 24 in.90	.80
5 to 6 ft. B&Bheavy.....	4.00	3.50
6 to 8 ft. B&Bheavy.....	6.00	5.50
8 to 10 ft. B&Bheavy.....	8.00	7.00
EUONYMUS oxyphyllus—15'		
Dark red fruit in fall		
5 to 6 ft.	3.00	2.50

DECIDUOUS SHRUBS

	1 to 9 Each	10 & up Each
EUONYMUS yedoensis—10'		Yeddo Euonymus
A striking plant with pink and orange fruit in September.		
3 to 4 ft.	1.50	1.35
4 to 5 ft.	2.00	1.75
EXOCHORDA racemosa—10'		Pearlbush
Slender spreading shrub.		
18 to 24 in.90	
2 to 3 ft.	1.20	
FORSYTHIA intermedia spectabilis—8'		Showy Border Forsythia
Upright grower. Masses of yellow flowers in April.		
12 to 18 in.60	.55
2 to 3 ft.90	.80
3 to 4 ft.	1.10	1.00
4 to 5 ft.	1.50	1.35
5 to 6 ft.	2.00	1.75
FORSYTHIA spring glory—8'		Spring Glory Forsythia
A new forsythia noted for abundant blossoms.		
12 to 18 in.75	.65
18 to 24 in.	1.00	.90
3 to 4 ft.	1.50	1.35
FORSYTHIA suspensa—6'		Weeping Forsythia
Long weeping branches. Yellow flowers in April. Splendid for hillsides and above walls.		
12 to 18 in.65	.60
18 to 24 in.75	.70
2 to 3 ft.	1.00	.90
3 to 4 ft.	1.50	1.35
HAMAMELIS virginiana—15'		Witch Hazel
Our latest to bloom. Small yellow flowers in November.		
18 to 24 in.	1.00	.90
2 to 3 ft.	1.25	1.10
HIBISCUS syriacus—12'		Shrub Althea
Also known as Rose of Sharon. Blooms in August and September. Flowers like that of Hollyhock. We have red, white, purple, please specify color desired.		
18 to 24 in.75	.70
2 to 3 ft.90	.80
3 to 4 ft.	1.50	1.35
HYDRANGEA arborescens grandiflora—5'		Snowball Hydrangea
White blossoms from June to August. Prefers partial shade.		
12 to 18 in.	1.00	.90
4 to 5 ft.	2.50	2.25
HYDRANGEA paniculata grandiflora—10'		Peegee Hydrangea
Very large heads of white flowers in August turning pink and then bronze in fall.		
12 to 18 in.90	.80
2 to 3 ft.	1.10	1.00

DECIDUOUS SHRUBS

	1 to 9 Each	10 & up Each
ILEX serrata—12'	Finetooth Holly	
Brilliant red berries in fall and winter. Plant in groups.		
2 to 3 ft.	1.50	1.40
3 to 4 ft.	2.00	1.75
4 to 5 ft.	3.00	2.50
5 to 6 ft. B&B	6.00	5.50
6 to 7 ft. B&B	8.00	7.00
7 to 8 ft. B&B	10.00	9.00
ILEX verticillata—10'	Common Winterberry	
Beautiful red berries in fall and winter. May be cut for indoor decorations. Must be planted in pairs to produce fruit. Prefers moist location.		
12 to 18 in.80	.70
18 to 24 in.	1.00	.90
2 to 3 ft.	1.25	1.00
4 to 5 ft.	2.25	2.00
4 to 5 ft. B&B	5.00	4.75
5 to 6 ft. B&B	7.50	7.00
6 to 8 ft. B&B	10.00	9.00
KERRIA japonica—4'	Japanese Kerria	
Bright green twigs with yellow flowers in Summer.		
12 to 18 in.90	.80
2 to 3 ft.	1.50	1.35
KERRIA japonica pleniflora—4'	Double Japanese Kerria	
Double yellow flowers in Summer. Green stems.		
18 to 24 in.	1.25	1.00
KOLKWITZIA amabilis—8'	Beauty Bush	
Long sprays of pink flowers in May and June.		
12 to 18 in.90	.80
18 to 24 in.	1.00	.90
2 to 3 ft.	1.25	1.15
3 to 4 ft.	1.75	1.50
4 to 5 ft. heavy.....	4.00	
5 to 6 ft. heavy.....	5.00	
LIGUSTRUM amurense—10'	Amur Privet	
Good hardy hedge plant. Blue-black berries in September.		
18 to 24 in. (24.00 per 100)30	.26
2 to 3 ft. (32.00 per 100)40	.36
3 to 4 ft. (40.00 per 100)50	.44
4 to 5 ft.75	.65
LIGUSTRUM ibolium—8'	Ibolium Privet	
Looks like California Privet, but much hardier.		
18 to 24 in. (18.00 per 100)25	.22
2 to 3 ft. (22.00 per 100)30	.25
LIGUSTRUM ovalifolium—10'	California Privet	
Glossy green leaves. Freezes back in cold winters.		
2 to 3 ft. (20.00 per 100)25	.22
3 to 4 ft. (25.00 per 100)30	.27
4 to 5 ft.60	.50
5 to 6 ft.90	.80

DECIDUOUS SHRUBS

	1 to 9 Each	10 & up Each
LIGUSTRUM regelianum—6' Regel's Privet		
Excellent foliage. Blue-black berries in September. Good bank plant or hedge. Rugged.		
12 to 18 in. spread45	.40
18 to 24 in. spread60	.55
24 to 30 in. spread80	.75
30 to 36 in. spread	1.00	.90
LIGUSTRUM vulgare—12' European Privet		
Holds foliage late. Black berries in September.		
2 to 3 ft. (50.00 per 100)60	.55
3 to 4 ft. (60.00 per 100)70	.65
4 to 5 ft. (80.00 per 100)	1.00	.90
5 to 6 ft. (110.00 per 100)	1.50	1.35
LIGUSTRUM vulgare nanum—3' Lodense Privet		
A beautiful low hedge that retains foliage until December.		
15 to 18 in. (60.00 per 100)75	.65
18 to 24 in. (75.00 per 100)90	.80
LINDERA benzoin—12' Common Spicebush		
Spicy red fruits, dotting the yellow Autumn foliage.		
2 to 3 ft.	1.00	.90
LONICERA bella albida—6' Belle Honeysuckle		
Red berries in late June. Splendid foliage.		
18 to 24 in.75	.60
LONICERA fragrantissima—8' Winter Honeysuckle		
Cream colored flowers in April. Semi-evergreen.		
18 to 24 in.75	.65
2 to 3 ft.90	.80
3 to 4 ft.	1.10	1.00
4 to 5 ft.	1.50	1.35
5 to 6 ft.	2.00	1.75
LONICERA korolkowi zabeli—7' Blueleaf Honeysuckle		
Attractive red flowers in May and June.		
18 to 24 in.	1.00	.90
2 to 3 ft.	1.25	1.00
3 to 4 ft.	1.75	1.50
LONICERA morrowi—8' Morrow Honeysuckle		
Yellow flowers in April. Red berries in August.		
18 to 24 in.80	.70
2 to 3 ft.90	.80
4 to 5 ft.	1.50	1.35
5 to 6 ft. heavy	2.50	2.25
LONICERA tatarica—10' Tatarian Honeysuckle		
Pink to white flowers. Abundant red berries.		
2 to 3 ft.80	.70
3 to 4 ft.	1.00	.90
5 to 6 ft. B&B heavy clump	6.00	5.00
6 to 7 ft. B&B heavy specimens ..	8.00	7.00
7 to 8 ft. B&B heavy specimens ..	10.00	9.00
8 to 10 ft. B&B heavy specimens ..	12.00	11.00
LONICERA tatarica alba—10' White Tatarian Honeysuckle		
Pure white flowers followed by red berries.		
6 to 8 ft. B&B heavy	8.00	7.00

DECIDUOUS SHRUBS

	1 to 9 Each	10 & up Each
LONICERA tatarica rosea—10' Rosy Tatarian Honeysuckle Pink to rose flowers with red berries in fall.		
2 to 3 ft.90	.80
3 to 4 ft.	1.25	1.10
LONICERA tatarica sibirica—10' Red Tatarian Honeysuckle Flowers deep pink producing red fruit.		
18 to 24 in.75	.70
2 to 3 ft.90	.80
3 to 4 ft.	1.25	1.10
PHILADELPHUS amalthee—6' Outstanding Philadelphus with large single white flowers with pink centers.		
12 to 18 in.	1.00	.90
18 to 24 in.	1.25	1.15
PHILADELPHUS coronarius—10' Sweet Mockorange Old-fashioned sweet smelling mockorange. White flowers in June.		
12 to 18 in.70	.65
18 to 24 in.80	.75
3 to 4 ft.	1.25	1.10
4 to 5 ft.	2.00	1.75
5 to 6 ft. heavy	3.00	2.50
6 to 8 ft. heavy	4.00	3.50
PHILADELPHUS enchantment—8' Double white flowers in thick panicles similar to Bouquet Blanc.		
18 to 24 in.	1.25	1.10
2 to 3 ft.	1.50	1.25
PHILADELPHUS lemoinei—6' Lemoine Mockorange White flowers in June. Very fragrant.		
12 to 18 in.65	.60
18 to 24 in.80	.75
2 to 3 ft.	1.00	.90
PHILADELPHUS virginalis—8' Double White Mockorange Beautiful semi-double white flowers in June.		
18 to 24 in.	1.00	.90
2 to 3 ft.	1.35	1.25
3 to 4 ft.	1.50	1.35
PHILADELPHUS virginalis bouquet blanc—5' Bouquet Blanc Mockorange Large white semi-double flowers in June.		
12 to 18 in.	1.00	.90
2 to 3 ft.	1.25	1.10
3 to 4 ft.	1.50	1.35
PHYSOCARPUS opulifolius—10' Ninebark Pinkish white long lasting flowers in June. Rapid grower.		
18 to 24 in.75	.65
2 to 3 ft.	1.00	.90
PHYSOCARPUS opulifolius nanus—5' Dwarf Ninebark Pinkish white flowers in May and June. Prefers shade.		
12 to 18 in.90	.80
2 to 3 ft.	1.00	.90
3 to 4 ft.	2.25	2.10
4 to 5 ft. heavy	2.50	2.25

DECIDUOUS SHRUBS

	1 to 9 Each	10 & up Each
PONTENTILLA fruticosa—3'	Shrubby Cinquefoil	
Yellow flowers in August and September.		
12 to 18 in.75	.70
2 to 3 ft.	1.00	.90
PRUNUS glandulosa sinensis—6'	Double Pink Almond Cherry	
Arching branches covered with double pink flowers in May. Spectacular.		
12 to 18 in. B&B	1.50	1.35
18 to 24 in. B&B	2.00	1.75
RHAMNUS cathartica—12'	Buckthorn	
Makes a good tall hedge. Black berries in fall. Will stand shade.		
2 to 3 ft.75	.65
3 to 4 ft.85	.75
RHAMNUS frangula—12'	Glossy Buckthorn	
Lustrous green foliage, dense habit of growth.		
2 to 3 ft.	1.25	1.00
3 to 4 ft.	1.50	1.35
RHODOTYPOS scandens (kerriodes)—6'	Jetbead	
White flowers in May and June. Shiny black berries in October. Likes shade.		
18 to 24 in.90	.80
2 to 3 ft.	1.25	1.10
RHUS aromatica (canadensis)—4'	Fragrant Sumac	
Fragrant shrub producing red berries and red leaves in fall.		
12 to 18 in.75	.70
2 to 3 ft. heavy.....	1.00	.90
RIBES alpinum—4'	Mountain Currant	
A mighty good plant for planting in shady nooks.		
12 to 15 in.90	.80
RIBES odoratum—6'	Buffalo Currant	
Yellow fragrant flowers in May. Black berries in July.		
12 to 18 in.	1.00	.90
2 to 3 ft.	1.25	1.10
SALIX purpurea nana—5'	Dwarf Purpleosier Willow	
A dwarf shrub willow used sometimes for hedges.		
2 to 3 ft.	1.50	1.35
3 to 4 ft.	2.00	1.75
4 to 5 ft.	2.50	2.00
SPIRAEA arguta—6'	Garland Spirea	
Most showy of early Spireas. Should be more widely used.		
12 to 18 in.65	.55
18 to 24 in.90	.80
2 to 3 ft.	1.10	1.00
SPIRAEA bumaldi anthony waterer—3'	Anthony Waterer Spirea	
Attractive flat heads of deep pink flowers all summer.		
9 to 12 in.60	.50
12 to 15 in.75	.65
15 to 18 in.90	.80
SPIRAEA prunifolia—8'	Bridal Wreath Spirea	
Pure white flowers on arching branches.		
18 to 24 in.	1.00	.90
2 to 3 ft.	1.25	1.10
3 to 4 ft.	1.50	1.40

DECIDUOUS SHRUBS

	1 to 9 Each	10 & up Each
SPIRAEA thunbergi—5' Thunberg Spirea		
Mass of delicate white flowers in April.		
2 to 3 ft.	1.00	.90
SPIRAEA van houttei—10' Vanhoutte Spirea		
Commonly planted Spirea. Mass of white flowers in June.		
18 to 24 in.65	.60
2 to 3 ft.80	.70
3 to 4 ft.	1.10	1.00
4 to 5 ft. B&B	2.50	2.25
SYMPHORICARPOS albus (racemosus)—5' Snowberry		
A good sun or shade plant having white berries in fall.		
12 to 18 in.50	.40
2 to 3 ft.90	.80
SYMPHORICARPOS chenaulti—5' Chenault Coralberry		
Small leaves. Pinkish flowers in July. Abundant coral berries in September.		
12 to 18 in.50	.40
2 to 3 ft.90	.80
3 to 4 ft.	1.25	1.10
4 to 5 ft.	1.50	1.35
SYMPHORICARPOS ORBICULATUS—3' Indian Currant		
Clusters of coralberries. Excellent for bank planting.		
12 to 18 in.55	.45
SYRINGA chinensis—10' Chinese Lilac		
Vigorous growth. Free blooming. Lavender flowers.		
18 to 24 in.	1.00	.90
2 to 3 ft.	1.25	1.10
3 to 4 ft.	1.50	1.35
4 to 5 ft.	2.00	1.75
SYRINGA persica alba—6' White Persian Lilac		
Smallest of the Lilacs. Branches covered with small flower clusters.		
2 to 3 ft.	1.50	1.35
SYRINGA chinensis alba—10' White Chinese Lilac		
White flowers in May. Vigorous grower.		
3 to 4 ft.	1.50	1.35
SYRINGA villosa—8' Late Lilac		
Pinking lilac color. Late and sure to bloom.		
18 to 24 in.	1.00	.90
3 to 4 ft.	1.50	1.35
4 to 5 ft.	2.00	1.75
SYRINGA vulgaris—15' Common Purple Lilac		
An old-fashioned favorite. Requires sunny spot. Makes a good screen planting.		
12 to 18 in.75	.70
18 to 24 in.	1.00	.90
2 to 3 ft.	1.25	1.10
5 to 6 ft. clumps B&B	10.00	9.00
6 to 8 ft. clumps B&B	12.00	11.00
8 to 10 ft. heavy clumps B&B	18.00	16.00
SYRINGA vulgaris alba—15' Common White Lilac		
Similar to vulgaris except white flowers.		
2 to 3 ft.	1.50	1.35
3 to 4 ft.	1.75	1.65
4 to 5 ft.	2.50	2.25

DECIDUOUS SHRUBS

1 to 9	10 & up
Each	Each

SYRINGA vulgaris**Named Varieties**

A number of these varieties have been imported by us direct from Holland to give you some of the best hybrid lilacs in America. They need sun and a well drained neutral soil.

Alphonse Lavalle—18-24" - 2-3'	Double Violet
Belle de Nancy—18-24"	Double Rose
Charles Joly—18-24" - 2-3' - 3-4'	Double Purplish Red
Charles X—18-24"	Single Purplish Red
General Pershing—18-24"	Double Light Pink
Hugo Koster—18-24"	Single Light Red Mauve
Lucie Baltet—18-24" - 2-3'	Cream Flushed with Rose
Ludwig Spaeth—18-24" - 2-3'	Single Red
Mad. Casimer Perier—18-24"	Double Creamy White
Mme. Lemoine—2-3'	Large Double White
Pres. Grevy—18-24" - 2-3'	Double Blue
C. Havemeyer—18-24" - 2-3'	Double Cobalt Lilac
President Lincoln—18-24"	Porcelain Blue
Hugo de Vries—15-18" - 18-24"	Mauve Red
Marie Le Graye—15-18" - 18-24"	Single White
Michael Buchner—18-24" - 2-3'	Light Lilac Blue Double
Olivier Serres—18-24" - 2-3'	Double Blue

15 to 18 in.	1.25	1.10
18 to 24 in.	1.50	1.35
18 to 24 in. B&B	2.50	2.25
2 to 3 ft.	2.00	1.75
2 to 3 ft. B&B	3.50	3.00
3 to 4 ft.	3.00	2.75
3 to 4 ft. B&B	5.50	5.00
4 to 5 ft. B&B	7.00	6.00
5 to 6 ft. B&B	9.00	8.00

(Note: We have a number of 3-4', 4-5' and 5-6' sizes in mixed varieties.) (All good full plants.)

VIBURNUM burkwoodi—8'**Burkwood Viburnum**

Almost evergreen viburnum. Similar in habit to Carlesi, but not as fragrant.

18 to 24 in. B&B	4.50	4.25
2 to 3 ft. B&B	6.00	5.00

VIBURNUM carlesi—6'**Fragrant Viburnum**

Extremely fragrant (spicy) pink and white flowers in May. A few cut flowers perfume the entire room.

18 to 24 in. B&B	4.50	4.25
24 to 30 in. B&B	6.00	5.50
30 to 36 in. B&B	7.50	7.00

VIBURNUM cassinoides—12'**Witherod Viburnum**

White flowers in June. Blue berries and brilliant autumn color.

2 to 3 ft.	1.25	1.15
------------	------	------

VUBURNUM dentatum—10'**Arrowwood Viburnum**

White flowers in May and June. Black berries and good fall color. Shade tolerant.

18 to 24 in.	.90	.80
2 to 3 ft.	1.00	.90
4 to 5 ft.	heavy	2.50
5 to 6 ft.	heavy	4.00
		2.25
		3.50

DECIDUOUS SHRUBS

	1 to 9 Each	10 & up Each
VIBURNUM dilatatum—10'	Linden Viburnum	
White flowers in May. Abundance of red fruit in fall.		
2 to 3 ft.	1.25	1.10
3 to 4 ft.	1.50	1.35
4 to 5 ft.	2.00	1.75
VIBURNUM lantana—15'	Wayfaring Tree	
Good heavy foliage. Red berries turning black.		
18 to 24 in.	1.00	.90
2 to 3 ft.	1.50	1.35
VIBURNUM lentago—20'	Nannyberry	
White flowers in June. Blue-black berries and good color in fall.		
18 to 24 in.90	.80
3 to 4 ft.	1.50	1.35
4 to 5 ft.	2.00	1.75
5 to 6 ft. B&B heavy specimen.....	7.50	7.00
6 to 8 ft. B&B heavy specimen.....	10.00	9.00
VIBURNUM molle—12'	Kentucky Viburnum	
White flowers in May. Blue-black berries in Autumn.		
12 to 18 in.75	.65
18 to 24 in.	1.00	.90
2 to 3 ft.	1.25	1.10
VIBURNUM opulus—10'	European Cranberry-bush	
White flowers in May. Red fruit and good fall coloration.		
12 to 18 in.75	.65
18 to 24 in.90	.80
2 to 3 ft.	1.00	.90
4 to 5 ft.	1.50	1.25
5 to 6 ft. B&B heavy.....	5.00	4.50
6 to 8 ft. B&B heavy.....	7.50	7.00
VIBURNUM opulus nanum—2'	Dwarf Cranberry-bush	
A dwarf form. Very compact. Small foliage.		
6 to 12 in.	1.25	1.15
12 to 15 in.	1.75	1.60
VIBURNUM prunifolium—15'	Blackhaw	
White flowers in May. Blue-black fruit. Excellent coloration in Autumn.		
2 to 3 ft.	2.25	2.00
4 to 5 ft.	2.50	2.25
5 to 6 ft. B&B heavy.....	6.00	5.50
6 to 7 ft. B&B heavy.....	8.00	7.50
7 to 8 ft. B&B heavy.....	10.00	9.00
VIBURNUM pubescens—6'	Downy Viburnum	
Compact grower. Good foliage. Blue-black fruit. Crimson foliage in fall.		
18 to 24 in.	1.10	1.00
VIBURNUM rhytidophyllum—9'	Leatherleaf Viburnum	
Lustrous dark green, wrinkled leaves.		
12 to 18 in. B&B	4.50	4.00

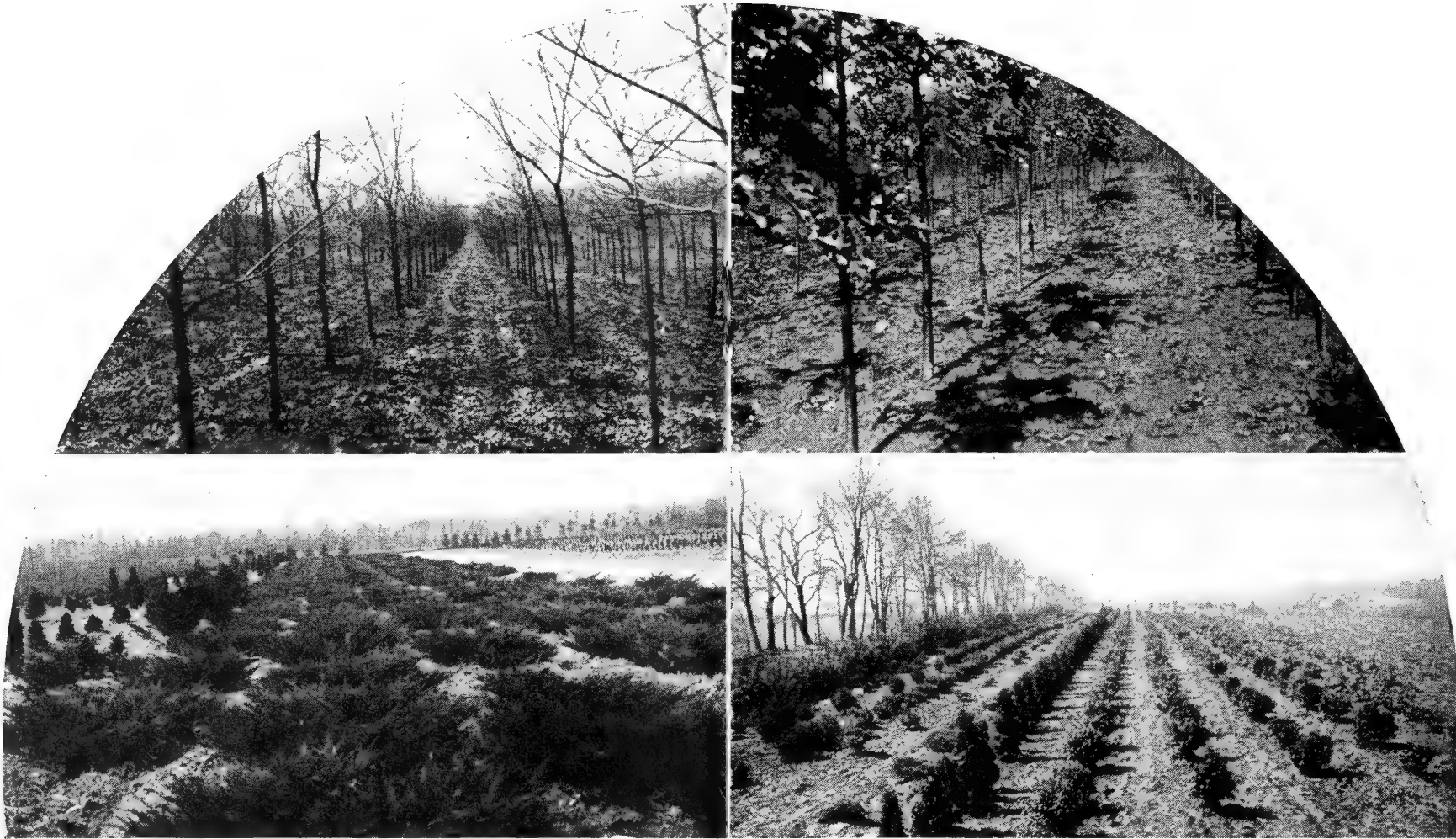
DECIDUOUS SHRUBS

	1 to 9 Each	10 & up Each
VIBURNUM sieboldi—10' Siebold Viburnum		
Large foliage. White flowers. Pink changing to blue-black fruit in fall.		
2 to 3 ft.	1.25	1.15
3 to 4 ft.	1.50	1.35
4 to 5 ft.	2.00	1.75
VIBURNUM tomentosum sterile—8' Japanese Snowball		
Abundance of white snowballs in June. Good foliage.		
2 to 3 ft.	1.50	1.35
VIBURNUM trilobum—12' American Cranberry-bush		
White flowers in May. Red fruit in fall.		
15 to 18 in.90	.80
4 to 5 ft.	2.00	1.75
5 to 6 ft.	2.50	2.25
VITEX A. latifolia (Macrophylla)—4' Lilac Chastetree		
Valuable for late summer flowers. Lilac flowers in August.		
2 year	1.00	.90
3 year	1.25	1.10
WEIGELA bristol ruby—6' Bristol Ruby Weigela		
Deep crimson flowers in great abundance in May and June.		
18 to 24 in.	1.50	1.25
2 to 3 ft.	2.00	1.75
3 to 4 ft.	3.00	2.75
4 to 5 ft.	3.75	3.50
WEIGELA candida—8' Snow Weigela		
Pure white flowers in May.		
18 to 24 in.	1.25	1.10
WEIGELA eva rathke—5' Eva Rathke Weigela		
Crimson flowers in May and June. Compact grower.		
12 to 18 in.90	.80
2 to 3 ft.	1.25	1.10
WEIGELA floribunda—10' Crimson Weigela		
Long sprays of crimson flowers in May and June.		
2 to 3 ft.	1.10	1.00
WEIGELA florida—6' Pink Weigela		
Carmine-pink flowers in May and June.		
12 to 18 in.75	.65
18 to 24 in.90	.80
2 to 3 ft.	1.25	1.10
WEIGELA florida variegata—6' Variegated-leaf Weigela		
Green leaves edged with yellow pink flowers.		
15 to 18 in.90	.80
18 to 24 in.	1.25	1.10
2 to 3 ft.	1.50	1.35
3 to 4 ft.	2.00	1.75
ZANTHORHIZA simplicissima—3' Yellowroot		
Feathery little shrub that carpets ground with yellow in Autumn.		
10 to 12 in. clumps	1.00	.90

DECIDUOUS and FLOWERING

We have a large selection of hardy shade trees growing in our Nursery and can supply and plant if necessary, trees up to 30 inches in circumference of the trunk. This list is for the trees only and in a separate part of this catalogue we have listed the larger trees furnished and planted for you.

	1 to 9 Each	10 & up Each
ACER pennsylvanicum—25'	Striped Maple	
Large leaves. Bark green with white stripes.		
1 to 1½ in. caliper	8.00	7.00
1½ to 2 in. caliper	10.00	9.00
2 to 2½ in. caliper	12.50	11.50
2½ to 3 in. caliper	15.00	14.00
3 to 3½ in. caliper	20.00	18.00
ACER platanoides—75'	Norway Maple	
Makes large dense shade tree with round top.		
6 to 8 ft.	3.50	3.25
8 to 10 ft.	4.25	4.00
1¼ to 1½ in. caliper	5.75	5.50
1½ to 2 in. caliper	8.00	7.50
2 to 2½ in. caliper	15.00	13.00
2½ to 3 in. caliper	18.00	16.00
3 to 3½ in. caliper	25.00	22.50
3½ to 4 in. caliper	35.00	32.00
(For larger sizes see large tree section)		
ACER platanoides columnare—75'	Column Maple	
Narrow pyramidal type Norway Maple.		
4 to 5 ft. whips	3.50	3.00
ACER platanoides globosum	Globe Norway Maple	
Round head Norway Maple.		
7 year head	20.00	18.00
ACER platanoides schwedleri	Schwedler Maple	
Red leaves in Spring. Similar growth as Norway.		
5 to 6 ft. whips	2.50	2.25
6 to 8 ft. whips	3.00	2.75
6 to 8 ft. branched	5.00	4.50
ACER platanoides Schwedleri nigra	Crimson King Maple	
New improved variety of Schwedler Maple		
4 to 5 ft. whips	5.50	5.00
ACER pseudoplatanus—60'	Planetree Maple	
A maple with leaves like a sycamore.		
1½ to 2 in. caliper	10.00	
2 to 2½ in. caliper	15.00	
2½ to 3 in. caliper	18.00	
ACER pseudoplatanus purpurea	Purple-leaf Planetree Maple	
Similar to Planetree Maple except red leaves.		
1½ to 2 in. caliper	10.00	
2 to 2½ in. caliper	15.00	
2½ to 3 in. caliper	18.00	



SOME VIEWS OF A SMALL PART OF THE NURSERY GROWN WINTER HARDY PLANTS

at the

JOHN M. EISLER NURSERIES

Our nurseries located 7 miles west of Butler, just off Route 422, are one of the largest in the state and we cordially invite you to visit them. You can see how we start the tiny little cuttings in our own propagation house and then grow them into mature plants to supply our customers.

We grow over 500 varieties of trees and shrubs all of which must be perfectly hardy to endure our Western Pennsylvania winters. You may come to the nurseries any day except Sunday and select the material that you like and have it dug fresh for you, or if you can't come any other day in the week, you are invited to stroll through them on Sunday for we always welcome visitors.

The quality of the stock furnished by us is far superior to that sold by so many brokers, who call themselves Nurseries, and

who rely upon supplying cheap southern grown stock. The costs of growing plants in this climate with our short summer is far more than that of the south and in many cases we simply can't compete when price alone is considered, but we take pride in growing and selling quality plants as has been done by our family since 1870.

We maintain a landscape service and will be happy to plant your property for you. We are not landscape architects but recommend their services to you. If you wish detailed plans for large homes and estates, it is money well spent when you secure the services of an ethical landscape architect. If our years of practical experience, is of assistance to you, we are always happy to give our advice free, for we employ some of the best horticulturists in this locality.



DECIDUOUS and FLOWERING TREES

	1 to 9 Each	10 & up Each
ACER rubrum—60'		Red Maple
Brilliant fall color. Makes good shade tree.		
2 to 3 ft.75	.60
3 to 4 ft.	1.50	1.35
4 to 5 ft.	2.25	2.00
5 to 6 ft.	3.00	2.50
6 to 7 ft.	3.75	3.25
7 to 8 ft.	4.75	4.25
ACER saccharum—75'		Sugar Maple
Slow growing. Mighty good shade tree. Leaves turn bright yellow and scarlet in autumn.		
2 to 3 ft.	1.00	.90
3 to 4 ft.	1.50	1.35
4 to 5 ft.	2.50	2.00
5 to 6 ft.	3.00	2.50
6 to 8 ft.	4.00	3.50
8 to 10 ft.	5.50	4.50
1 to 1½ in. caliper	7.50	7.00
1½ to 2 in. caliper	10.00	9.00
ACER saccharinum—75'		Silver Maple
Fast growing maple. Wood brittle when old. Used extensively when quick shade is desired.		
1¼ to 1 in. caliper	4.00	3.50
1½ to 2 in. caliper	6.00	5.50
2 to 2½ in. caliper	8.00	7.00
2½ to 3 in. caliper	12.00	11.00
3 to 3½ in. caliper	18.00	16.00
3½ to 4 in. caliper	24.00	22.00
BETULA pendula (alba)—50'		European White Birch
Introduced from Europe, but common now in Eastern United States. Bark that peels white.		
3 to 4 ft. single trunk	1.50	1.25
3 to 4 ft. clump B&B	5.00	4.50
4 to 5 ft. single trunk	2.00	1.75
4 to 5 ft. clump B&B	7.50	7.00
5 to 6 ft. single trunk	3.00	2.75
5 to 6 ft. clump B&B	10.00	9.50
6 to 8 ft. single trunk	4.00	3.75
6 to 8 ft. clump B&B	12.50	12.00
BETULA pendula laciniata—50'		Cutleaf Weeping Birch
Cut leaf and graceful. White bark trunk with drooping branches.		
5 to 6 ft.	4.00	3.50
6 to 8 ft.	6.00	5.50
CASTANEA mollissima		Chinese Chestnut
This is a blight resistant chestnut tree which bears nuts similar in size and taste to our American Chestnut. Trees generally bear in four years after planting. Every farm, garden and estate should have a few trees.		
2 to 3 ft.	2.00	1.75
3 to 4 ft.	3.00	2.50
4 to 5 ft.	4.00	3.50
5 to 6 ft.	5.00	4.50
1½ to 2 in. caliper	15.00	12.50
2 to 2½ in. caliper	20.00	17.50
2½ to 3 in. caliper	25.00	22.50

DECIDUOUS and FLOWERING TREES

	1 to 9 Each	10 & up Each
CELTIS occidentalis—50'		Hackberry
Native tree with leaves like an elm. Birds love the fruit. Produces "witches brooms" at end of twigs.		
1½ to 2 in. caliper	10.00	9.00
CERCIS canadensis—40'		Redbud
Abundant small red flowers in early spring before leaves appear. Native.		
2 to 3 ft.	1.75	1.50
3 to 4 ft.	2.50	2.25
6 to 8 ft.	6.00	5.50
8 to 10 ft.	10.00	9.00
CORNUS alternifolia—20'		Pagoda Dogwood
Horizontal branches, blue-black fruit.		
5 to 6 ft. B&B	6.50	6.00
6 to 8 ft. B&B	9.50	9.00
8 to 10 ft. B&B	15.00	14.00
CORNUS florida—25'		White Flowering Dogwood
Beautiful at all seasons. White flowers in May. Attractive red fruit in fall with glorious coloration of foliage.		
3 to 4 ft.	6.50	6.00
5 to 6 ft. B&B	10.00	9.00
6 to 8 ft. B&B	12.50	11.00
8 to 10 ft. B&B	20.00	19.50
8 to 10 ft. B&Bheavy.....	30.00	25.00
10 to 12 ft. B&Bheavy.....	40.00	35.00
CORNUS florida rubra—20'		Red Flowering Dogwood
Similar to white in growth, but pink flowers in Spring.		
3 to 4 ft. B&B	7.00	6.50
4 to 5 ft. B&B	10.00	9.00
5 to 6 ft. B&B	12.50	12.00
6 to 8 ft. B&B	17.50	16.00
CORNUS mas—20'		Cornelian Cherry Dogwood
Yellow flowers—red fruit in Fall.		
4 to 5 ft. B&B	5.00	4.75
5 to 6 ft. B&B	7.50	6.50
6 to 8 ft. B&B	9.00	8.50
CRATAEGUS crugalli—30'		Cockspur Thorn
Wide spreading. Slender thorns. Fall coloration of foliage. Attractive red fruit until late winter.		
3 to 4 ft.	4.00	3.50
3 to 4 ft. B&B	5.50	5.00
CRATAEGUS intricata (coccinea)—20'		Thicket Hawthorn
Long curved thorns. Large scarlet fruit attractive to birds.		
3 to 4 ft.	4.00	3.50
8 to 10 ft. B&Bspecimen.....	35.00	32.50
10 to 12 ft. B&Bspecimen.....	50.00	45.00

DECIDUOUS and FLOWERING TREES

	1 to 9 Each	10 & up Each
CRATAEGUS mollis—20'		Downy Hawthorn
Handsome small tree. Large white flowers. Large red fruit.		
3 to 4 ft.	4.00	3.50
CRATAEGUS oxyacantha pauli—15'		Paul's Scarlet Hawthorn
Double scarlet flowers in May. A showy garden form.		
4 to 5 ft.	9.50	9.00
5 to 6 ft.	12.50	12.00
6 to 7 ft.	16.00	15.00
CRATAEGUS phaenopyrum (cordata)—20'		Washington Hawthorn
White flowers followed by abundant small red fruits.		
3 to 4 ft.	4.00	3.50
4 to 5 ft. B&B	5.50	5.00
5 to 6 ft. B&B	7.50	7.00
6 to 8 ft. B&B	12.50	12.00
FAGUS sylvatica—75'		European Beech
Slow growing. Long brown buds in Spring followed by tender green foliage.		
6 to 8 ft. B&B	22.50	
2 to 2½ in. caliper B&B	30.00	
2½ to 3 in. caliper B&B	35.00	
FRAXINUS americana—80'		White Ash
Variety of autumn color. Stately and long life.		
6 to 8 ft.	2.50	2.25
8 to 10 ft.	3.50	3.00
1½ to 2 in. caliper	7.00	6.00
2 to 2½ in. caliper	9.00	8.00
2½ to 3 in. caliper	14.00	12.50
FRAXINUS pennsylvanica lanceolata—60'		Green Ash
Greenest of Ash trees. Long span of life. Autumn color.		
6 to 8 ft.	2.50	2.25
8 to 10 ft.	3.50	3.00
1½ to 2 in. caliper	7.00	6.00
2 to 2½ in. caliper	9.00	8.00
2½ to 3 in. caliper	14.00	12.50
GINKO biloba—60'		Maidenhair Tree
Form varies from tight pyramid to wide-spread. Green fan-shaped leaves turning to a rich gold in fall.		
4 to 5 ft.	3.50	3.00
5 to 6 ft.	5.00	4.50
6 to 8 ft.	7.00	6.50
8 to 10 ft.	9.00	8.50
1½ to 1¾ in.	11.00	10.00
1¾ to 2 in.	14.00	13.00
GLEDITSIA triacanthos—60'		Honeylocust
A lovely tree with lace-like foliage.		
5 to 6 ft.	2.00	1.50
6 to 8 ft.	3.00	2.50
8 to 10 ft.	4.50	4.00
10 to 12 ft.	5.50	5.00

DECIDUOUS and FLOWERING TREES

	1 to 9 Each	10 & up Each
GLEDITZIA triacanthos inermis—50' Thornless Honeylocust		
Similar to regular Honeylocust but almost thornless.		
6 to 8 ft.	3.50	3.00
8 to 10 ft.	5.00	4.50
10 to 12 ft.	6.00	5.50
1½ to 2 in.	9.00	8.00
2 to 2½ in.	12.50	11.00
GLEDITZIA triacanthos inermis "Moraine" Moraine Locust		
Vase shaped. No seed pods or thorns.		
5 to 6 ft.	6.00	
6 to 7 ft.	8.00	
GYMNOCLADUS—60' Kentucky Coffee Tree		
Vigorous of growth. Almost no small twigs. Feathery foliage.		
Produces brown seed pods in autumn.		
6 to 8 ft.	5.00	4.50
1¼ to 1½ in. caliper	7.50	6.50
1½ to 2 in. caliper	12.00	
HALESIA carolina (tetraptera)—20' Silver-bell Tree		
Each branch bears a row of beautiful white bells in May.		
Rapid growing.		
4 to 5 ft.	2.50	2.00
5 to 6 ft.	3.00	2.50
6 to 8 ft. B&B	12.00	10.00
8 to 10 ft. B&B	15.00	12.50
10 to 12 ft. B&B	20.00	
12 to 14 ft. B&B	25.00	
LABURNUM anagyroides (vulgare)—20' Golden Chain		
Golden bunches of wisteria-like flowers in May and June.		
5 to 6 ft. B&B heavy clumps.....	15.00	14.00
6 to 8 ft. B&B heavy clumps.....	20.00	18.00
8 to 10 ft. B&B heavy clumps.....	25.00	22.50
LABURNUM watereri (vossi)—20' Improved Golden Chain		
Longer golden hanging wisteria-like flowers.		
4 to 5 ft. B&B	9.00	8.00
5 to 6 ft. B&B	12.00	11.00
6 to 7 ft. B&B	15.00	14.00
LARIX leptolepis—50' Japanese Larch		
Tender fresh green foliage in early Spring.		
12 to 14 ft. B&B	35.00	30.00
14 to 16 ft. B&B	40.00	35.00
16 to 18 ft. B&B	50.00	45.00
18 to 20 ft. B&B	60.00	50.00
20 to 25 ft. B&B	75.00	
LIQUIDAMBAR styraciflua—60' American Sweetgum		
Star-shaped leaves that produce gorgeous fall colors.		
Pyramidal growth. Rough cork bark.		
4 to 5 ft.	2.75	2.50
5 to 6 ft.	3.50	3.00
6 to 8 ft.	4.25	3.75
1½ to 2 in. B&B	15.00	13.00
2 to 2½ in. B&B	20.00	18.00
2½ to 3 in. B&B	30.00	27.00
3 to 3½ in. B&B	50.00	45.00
3½ to 4 in. B&B	70.00	65.00

DECIDUOUS and FLOWERING TREES

	1 to 9 Each	10 & up Each
--	----------------	-----------------

LIRIODENDRON tulipifera—100'		Tuliptree
A towering tree with large leaves turning pale gold in autumn.		
5 to 6 ft.	3.50	3.25
6 to 8 ft.	4.00	3.25
1 to 1½ in.	6.00	5.75
MAGNOLIA acuminata—70'		Cucumber Tree
Large vigorous foliage. A stately tree. Long red seed pods.		
8 to 10 ft. B&B	16.00	
10 to 12 ft. B&B	20.00	
MAGNOLIA soulangeana—20'		Saucer Magnolia
Large purplish pink and white flowers in May.		
2 to 3 ft. B&B	5.50	5.00
3 to 4 ft. B&B	7.50	7.25
5 to 6 ft. B&B	15.00	14.50
6 to 8 ft. B&B	20.00	19.00
MAGNOLIA virginiana (glauca)—25'		Sweetbay Magnolia
Deliciously fragrant creamy white flowers in June. Large glossy foliage. Attractive red seed pods.		
2 to 3 ft. B&B	5.00	4.50
3 to 4 ft. B&B	6.00	5.50
4 to 5 ft. B&B	9.00	8.50
MALUS almata		
4 to 5 ft.	3.75	3.50
MALUS atrosanguinea—20'		Carmine Crab
Crimson flowers with tinge of purple. Purplish fruit.		
4 to 5 ft.	3.00	2.75
5 to 6 ft.	4.00	3.75
MALUS dolga—15'		Dolga Crab
Single white flower. Brilliant red fruit which makes fine crabapple jelly. Beautiful and useful.		
3 to 4 ft.	2.25	2.00
4 to 5 ft.	3.00	2.75
5 to 6 ft.	4.00	3.75
MALUS flame		
Pale pink flowers. Bright red fruit.		
4 to 5 ft.	5.00	4.50
MALUS floribunda—30'		Japanese Flowering Crab
Deep carmine flower buds changing to pale pink. A mighty showy tree in bloom. Abundance of red fruit.		
3 to 4 ft.	2.25	2.00
4 to 5 ft.	3.00	2.75
5 to 6 ft.	4.00	3.75
MALUS floribunda purpurea		
3 to 4 ft.	3.00	2.75
4 to 5 ft.	4.00	3.75
MALUS halliana parkmani—15'		Hall's Parkman Crabapple
Semi-double bright rose, pink flowers.		
3 to 4 ft.	2.25	2.00
4 to 5 ft.	3.00	2.75

DECIDUOUS and FLOWERING SHRUBS

	1 to 9 Each	10 & up Each
MALUS hopa—12' Red Flowering Crabapple		
Red flower in May with attractive red fruit in fall.		
3 to 4 ft.	2.25	2.00
5 to 6 ft.	4.00	3.75
6 to 8 ft.	5.00	4.75
1¼ to 1½ in. caliper B&B	10.50	10.00
MALUS ioensis plena—15' Bechtel Crabapple		
Double apple-blossom large pink flowers in May.		
3 to 4 ft.	2.50	2.25
4 to 5 ft.	3.50	
5 to 6 ft.	5.50	
MALUS micromalus—10' Midget Crabapple		
Single pink.		
4 to 5 ft.	3.00	2.75
MALUS niedzwetzkyana—20' Redvein Crabapple		
Red blossoms with very large red fruit in fall.		
4 to 5 ft.	3.00	2.75
5 to 6 ft.	4.00	3.75
6 to 8 ft.	5.00	4.75
MALUS purpurea—15' Purple Crabapple		
White flowers suffused with pink.		
4 to 5 ft.	3.00	2.75
5 to 6 ft.	4.00	3.75
MALUS purpurea eleyi—15' Eley Purple Crabapple		
Reddish-purple leaves and flowers. Deep purple red fruit.		
4 to 5 ft.	3.00	2.75
5 to 6 ft.	4.00	3.75
6 to 8 ft.	5.00	4.75
1 to 1½ in. caliper B&B	10.00	9.00
MALUS sargentii—8' Sargent Crabapple		
Low spreading tree with pure white flowers and red fruit.		
2 to 3 ft.	2.75	2.50
3 to 4 ft.	3.75	3.50
5 to 6 ft. B&B heavy.....	10.00	9.00
6 to 8 ft. B&B heavy.....	15.00	14.00
MALUS scheideckeri—20' Scheidecker Crabapple		
Pale pink flowers in May. Yellow fruit in fall.		
4 to 5 ft.	3.00	2.75
MALUS red silver Red Silver Crabapple		
Attractive red blossoms followed by red fruit.		
3 to 4 ft.	2.25	2.00
4 to 5 ft.	3.00	2.75
5 to 6 ft.	5.50	5.00
MALUS spectabilis—15' Chinese Crabapple		
Pink flowers in May with large yellow fruit in fall.		
4 to 5 ft.	3.00	
MALUS zumi—15' Zumi Crabapple		
Flowers pink in bud becoming white. Abundant red fruits in fall and winter.		
4 to 5 ft.	3.00	2.75

DECIDUOUS and FLOWERING TREES

	1 to 9 Each	10 & up Each
OXYDENDRUM arboreum—30'		Sourwood
Tassels of white flowers in summer. Splendid green shining foliage in summer turning a vivid crimson in fall.		
2 to 3 ft. B&B	4.00	3.50
3 to 4 ft. B&B	6.00	5.50
6 to 8 ft. B&B	15.00	
8 to 10 ft. B&B	20.00	
PLATANUS occidentalis—120'		American Planetree
Towering mottled bark tree. Native along river banks.		
5 to 6 ft.	2.00	1.75
6 to 8 ft.	3.50	3.00
8 to 10 ft.	4.50	4.00
PLATANUS orientalis—75'		Oriental Plane Tree
Thrive in urban centers. Mottled bark.		
6 to 8 ft.	3.50	3.25
8 to 10 ft.	5.00	4.50
2½ to 3 in. caliper	15.00	
POPULUS alba bolleana—40'		Bolleana Poplar
Silvery green leaves. Light gray bark. Pyramidal.		
4 to 5 ft.	1.25	1.10
5 to 6 ft.	2.00	1.75
6 to 8 ft.	2.75	2.50
8 to 10 ft.	4.00	3.50
POPULUS nigra italica—60'		Lombardy Poplar
Rapid growing pyramidal tree. Used for screen planting.		
3 to 4 ft.50	.40
4 to 5 ft.75	.65
6 to 8 ft.	1.10	.90
8 to 10 ft.	1.40	1.25
1¼ to 1½ in. caliper	2.00	1.75
PRUNUS amanogawa		Flowering Cherry
Semi-double pale pink.		
4 to 5 ft.	6.00	5.50
PRUNUS americana newport—20'		Purpleleaf American Plum
Many small white flowers in Spring. Purple leaves all season.		
6 to 8 ft.	3.75	3.50
1 to 1¼ in. caliper B&B	10.00	9.00
1¼ to 1½ in. caliper B&B	12.00	11.00
PRUNUS americana thundercloud—20'		Thundercloud
An improved flowering plum. Cloud of white flowers in Spring.		
6 to 8 ft.	3.75	3.50
1 to 1¼ in.	10.00	9.00
1¼ to 1½ in.	12.00	11.00
PRUNUS cerasifera pissardi—12'		Purpleleaf Plum
Pink flowers in Spring. Purplish-red foliage all season.		
3½ to 4 in. caliper B&B specimen	50.00	
4 to 4½ in. caliper B&B specimen	65.00	
PRUNUS persica rubroplena—10'		Double Flowering Peach
Brilliant red double flowers. Very showy.		
4 to 5 ft.	3.00	2.75
(We also have 3 to 4'—double white at same price)		
PRUNUS serrulata kwanzan		Kwanzan Cherry
Double deep pink. A mighty good Japanese Flowering Cherry.		
3 to 4 ft.	3.50	3.00
5 to 6 ft.	7.00	6.50
1¼ to 1½ in. caliper B&B	12.00	11.00

DECIDUOUS and FLOWERING TREES

	1 to 9 Each	10 & up Each
PRUNUS serrulata Mt. Fuji		Mt. Fuji Cherry
Beautiful snow white Japanese Flowering Cherry.		
4 to 5 ft.	5.00	4.75
1½ to 2 in. caliper B&B	15.00	14.00
PRUNUS serrulata Paul Wohlert		Paul Wohlert Cherry
One of the best Japanese Flowering Cherries. Deep double pink.		
4 to 5 ft.	5.00	4.75
5 to 6 ft.	7.00	6.50
1¼ to 1½ in.	12.00	11.00
PRUNUS sieboldi—Syn. Naden—40'		Siebold Cherry
Delicate pink flowers in May.		
3 to 4 ft.	4.00	3.50
4 to 5 ft.	5.00	4.50
1½ to 2 in. caliper B&B	15.00	
PRUNUS subhirtella—30'		Higan Cherry
5 to 6 ft.	7.00	6.50
PRUNUS triloba—10'		Flowering Plum
Pink flowers in Spring followed by red fruit.		
3 to 4 ft.	3.00	2.75
QUERCUS alba—100'		White Oak
Tree of great strength and long life.		
5 to 6 ft.	4.50	4.00
6 to 8 ft.	7.50	7.00
1½ to 2 in. caliper	12.50	11.00
QUERCUS bicolor—60'		Swamp White Oak
Does well in wet places. Rough bark.		
8 to 10 ft.	10.00	9.50
1½ to 2 in. caliper	12.50	11.00
2 to 2½ in. caliper B&B	25.00	
2½ to 3 in. caliper B&B	40.00	
3 to 3½ in. caliper B&B	55.00	
QUERCUS borealis (rubra)—80'		Red Oak
Rapid grower. Stately. Attractive fall foliage.		
6 to 8 ft.	7.50	7.00
1½ to 2 in. caliper	12.50	11.00
QUERCUS coccinea—80'		Scarlet Oak
Brilliant fall color. Rather fast grower. Strong tree.		
5 to 6 ft.	4.00	3.75
6 to 8 ft.	7.50	7.00
1½ to 2 in. caliper	12.50	
2 to 2½ in. caliper B&B	25.00	

DECIDUOUS and FLOWERING TREES

	1 to 9 Each	10 & up Each
QUERCUS palustris—80'		Pin Oak
Fastest grower of oaks. Apparently free from disease and insects. A truly fine shade tree.		
8 to 10 ft.	6.50	6.00
1¼ to 1½ in. caliper	8.00	7.50
1½ to 2 in. caliper	12.00	11.00
2 to 2½ in. caliper	16.00	15.00
2½ to 3 in. caliper	22.50	20.00
3 to 3½ in. caliper B&B	50.00	
3½ to 4 in. caliper B&B	65.00	
(See large tree section for larger sizes)		
QUERCUS phellos—60'		Willow Oak
Willow-like leaves. Glossy green till Fall.		
2 to 2½ in. caliper B&B	25.00	
2½ to 3 in. caliper B&B	40.00	
QUERCUS prinus—50'		Chestnut Oak
A sturdy oak with leaves like a Chestnut tree.		
2 to 2½ in. caliper B&B	25.00	
2½ to 3 in. caliper B&B	40.00	
QUERCUS robur—80'		English Oak
Small leaves on a good stately tree.		
1½ to 2 in. caliper	12.50	11.00
2 to 2½ in. caliper B&B	25.00	
2½ to 3 in. caliper B&B	40.00	
3 to 3½ in. caliper B&B	60.00	
3½ to 4 in. caliper B&B	75.00	
ROBINA pseudoacacia—60'		Black Locust
Small leaves. Rough bark. Makes almost everlasting fence posts.		
6 to 8 ft.	2.00	1.75
8 to 10 ft.	5.00	4.50
SALIX blanda—40'		Wisconsin Weeping Willow
Long vine-like branches. Fast grower.		
6 to 8 ft.	2.50	2.25
8 to 10 ft.	3.50	3.25
1½ to 2 in. caliper	6.00	5.50
2 to 2½ in. caliper	9.00	8.00
SALIX discolor—20'		Pussy Willow
Bloom marks the start of Spring. Fast growing.		
18 to 24 in.90	.80
SOPHORA japonica—25'		Japanese Pagoda Tree
White flowers in August. Light and lacy beauty.		
3 to 4 ft. B&B	10.00	9.00
4 to 5 ft. B&B	12.50	11.00
5 to 6 ft. B&B	15.00	14.00
SORBUS aucuparia—50'		European Mountain Ash
Feathery foliage. Brilliant orange clusters of fruit in August and September.		
5 to 6 ft.	2.50	2.25
6 to 7 ft.	3.50	3.25
7 to 8 ft.	4.50	4.00
8 to 10 ft.	5.50	5.00
(For larger sizes see large trees)		

DECIDUOUS and FLOWERING TREES

		1 to 9	10 & up
		Each	Each
TAXODIUM distichum—100'			Baldcypress
Looks like an evergreen but drops its leaves. Pyramidal.			
1½ to 2	in. caliper B&B	15.00	
2	to 2½ in. caliper B&B	20.00	
2½ to 3	in. caliper B&B	25.00	
3	to 3½ in. caliper B&B	30.00	
TILIA americana—90'			American Linden
Fragrant. Rapid growth. Dense foliage. Heart-shaped leaves. Also known as basswood.			
1½ to 2	in. caliper	8.00	7.50
2	to 2½ in. caliper	12.50	11.00
2½ to 3	in. caliper	18.00	16.00
3	to 3½ in. caliper	22.50	20.00
(For larger sizes see large trees)			
TILIA americana fastigiata—75'			Pyramidal American Linden
Similar in foliage as American Linden but Pyramidal growth.			
2	to 2½ in. caliper	18.00	
2½ to 3	in. caliper	25.00	
3	to 3½ in. caliper B&B	52.50	
(For larger sizes see large trees)			
TILIA cordata—75'			Littleleaf European Linden
Fragrant when in bloom. Small heart-shaped leaves.			
1½ to 2	in. caliper	9.00	8.00
2	to 2½ in. caliper	13.50	12.50
2½ to 3	in. caliper	18.00	17.00
(For larger sizes see large trees)			
TILIA tomentosa—75'			Silver Linden
Silvery green heart-shaped leaves. Makes dense shade.			
1½ to 2	in. caliper	12.50	11.00
2	to 2½ in. caliper	20.00	18.00
2½ to 3	in. caliper	27.50	25.00
(For larger sizes see large trees)			
ULMUS americana—100'			American Elm
Graceful large spreading tree. In popular use for shade.			
4	to 5 ft.	1.00	.90
5	to 6 ft.	1.50	1.35
6	to 8 ft.	2.25	2.00
1½ to 2	in. caliper	6.50	6.00
2	to 2½ in. caliper	9.00	8.00
2½ to 3	in. caliper	12.50	11.00
3	to 3½ in. caliper	18.00	16.00
(For larger sizes see large trees)			
ULMUS americana moline—80'			Moline Elm
Beautiful elm. Leaves a bit larger than American Elm. Bark lighter and smoother.			
6	to 8 ft.	2.50	2.25
8	to 10 ft.	4.00	3.50
1½ to 2	in. caliper	8.00	7.00
2	to 2½ in. caliper	12.00	11.50
2½ to 3	in. caliper	18.00	16.00
3	to 3½ in. caliper	22.50	20.00
(For larger sizes see large trees)			

DECIDUOUS and FLOWERING TREES

	1 to 9 Each	10 & up Each
ULMUS americana Lake City	Lake City Elm	Elm
A selected type American Elm.		
2 to 2½ in. caliper	15.00	14.00
2½ to 3 in. caliper	20.00	18.00
3 to 3½ in. caliper	28.00	27.00
ULMUS americana urni—60'	Vase Elm	
Attractive vase-shaped Elm. A good shade tree.		
8 to 10 ft.	4.00	3.50
10 to 12 ft.	5.25	4.75
2 to 2½ in. caliper	14.00	13.00
2½ to 3 in. caliper	18.00	16.00
(For larger sizes see large trees)		
ULMUS carpinifolia sarniensis—75'	Wheatly Elm	
Broader leaves. Stiffly erect branches.		
2 to 2½ in. caliper	15.00	14.00
2½ to 3 in. caliper	20.00	18.00

VINES and GROUND COVERS

ARISTOLOCHIA durior—40'	Dutchman's Pipe	
Rapid grower. Larger leaves. Dense foliage.		
3 year heavy plants	2.00	1.75
CELASTRUS scandens	Native Bittersweet	
Brilliant display of orange fruit in fall. Rank Grower.		
3 year75	.65
CLEMATIS jackmanni		
Large blue-purple flowers.		
4 in. pots	1.50	1.35
CLEMATIS paniculata—25'	Sweetautumn Clematis	
White flowers from July to September. Fragrant.		
3 year	1.00	.90
CLEMATIS ramona		
Single pale blue.		
4 in. pots	1.50	1.35
EUONYMUS fortunei acutus	Wintercreeper Euonymus	
Evergreen climber. Deep green all year.		
4 in. pots90	.80
EUONYMUS fortunei carrierei	Glossy Wintercreeper	
Larger leaves than most evergreen Euonymus.		
4 in. pots90	.80
EUONYMUS fortunei coloratus	Purple Wintercreeper	
Evergreen but leaves change to deep purple in autumn.		
4 in. pots90	.80
18 to 24 in. B&B	1.65	1.50
2 to 3 ft. B&B	2.50	2.25
EUONYMUS fortunei kewensis	Baby Wintercreeper	
Small green leaves about the size of a mouse ear.		
3 in. pots65	.55
EUONYMUS fortunei radicans	Wintercreeper	
Good evergreen wall vine with rootlets to hold.		
4 in. pots90	.80
EUONYMUS fortunei vegetus	Bigleaf Wintercreeper	
Large green leaves. Orange fruit in fall.		
2¼ in. pots40	.35
3 in. pots65	.55
HEDERA helix—20'	English Ivy	
A good evergreen ground cover for shady nooks.		
2½ in. pots30	.25
3 in. pots45	.40

VINES and GROUND COVERS

	1 to 9 Each	10 & up Each
HEDERA helix baltica	Baltic	English Ivy
A small leaf hardy English Ivy.		
3 in. pots65	.60
LONICERA japonica halleana—20'		
Hall's Japanese Honeysuckle		
A good ground cover for slopes. Covers rapidly.		
2 yr. No. 1 plants heavy roots.....	.40	.35
(32.00 per 100)		
LYCIUM chinense—12'	Chinese	Matrimony Vine
Arching branches. Purple flowers. Red berries. Strong grower for hillsides.		
2 to 3 ft.60	.50
PACHYSANDRA terminalis—8'	Pachysandra	
Makes a low evergreen carpet.		
Potted plants (20.00 per 100)25	.22
PARTHENOCISSUS tricuspidata—40'	Boston	Ivy
Fast growing deciduous vine for stone and brick walls.		
2 yr. plants field grown65	.60
PARTHENOCISSUS tricuspidata lowi	Lows	Japanese Creeper
Dwarf leaves. Lacy appearance on walls.		
4 in. pots	2.00	1.85
POLYGONUM auberti	Silver	lace vine
Fleecy white flowers in June and July. Fast grower.		
2 yr.90	.80
VINCA Minor—8"		Myrtle
A good evergreen ground cover for shady places.		
2 yr. light (8.00 per 100).....	.10	.09
2 yr. heavy (12.00 per 100).....	.15	.14
WISTERIA sinensis—35'	Chinese	Wisteria
Purple flowers in June. Rapid grower.		
2 yr.	1.00	.90
WISTERIA sinensis alba—35'	Chinese	White Wisteria
White flowers in June. Strong grower.		
3 yr.	1.50	1.35

LARGE SPECIMEN TREES

These trees are all grown in our own nursery and may be selected and marked by the home owner before moving. The measurement is taken at a point six inches above the ground and is the diameter of the trunk.

Purchasing of these trees gives the home owner a ten to twenty year saving of time. If you are middle aged, you may have nice shade trees at once and not wait until you are old to enjoy the trees.

Prices quoted include the furnishing and planting of the tree complete with a large ball of earth as well as a replacement guarantee. Prices are subject to deviation dependent upon conditions and distance from Nursery. On orders for several trees to the same point, we can often give a discount. If holes are dug by owner and subsoil removed it will also cut costs.

ACER platanoides	Norway Maple
3 to 3½ in. diameter	65.00
3½ to 4 in. diameter	85.00
4 to 5 in. diameter	120.00
5 to 6 in. diameter	150.00
6 to 7 in. diameter	180.00
7 to 8 in. diameter	210.00

LARGE SPECIMEN TREES

	1 to 9 Each	10 & up Each
ACER saccharinum	Silver Maple	
3 to 3½ in. caliper	50.00	
3½ to 4 in. caliper	75.00	
4 to 5 in. caliper	100.00	
ACER saccharinum wieri	Wier Maple	
4 to 5 in. caliper	100.00	
5 to 6 in. caliper	135.00	
ACER saccharum	Sugar Maple	
4 to 5 in. caliper	120.00	
5 to 6 in. caliper	150.00	
LIQUIDAMBAR styraciflua—60'	American Sweetgum	
3 to 3½ in. caliper	80.00	
3½ to 4 in. caliper	100.00	
MALUS	Bearing Apple Trees	
We have a number of good varieties of apple trees in a young orchard that we can furnish and plant.		
3 to 3½ in. caliper	70.00	
3½ to 4 in. caliper	90.00	
PRUNUS cerasifera pissardi	Purpleleaf Plum	
3½ to 4 in. caliper	80.00	
4 to 4½ in. caliper	110.00	
QUERCUS palustris	Pin Oak	
3 to 3½ in. caliper	80.00	
3½ to 4 in. caliper	100.00	
4 to 5 in. caliper	125.00	
5 to 6 in. caliper	160.00	
6 to 7 in. caliper	200.00	
7 to 8 in. caliper	250.00	
8 to 10 in. caliper	300.00	
TILA americana	American Linden	
3 to 3½ in. caliper	80.00	
3½ to 4 in. caliper	100.00	
4 to 5 in. caliper	125.00	
5 to 6 in. caliper	160.00	
TILIA americana fastigiata	Pyramidal American Linden	
3 to 3½ in. caliper	80.00	
3½ to 4 in. caliper	100.00	
4 to 5 in. caliper	125.00	
TILIA cordata	Littleleaf European Linden	
3½ to 4 in. caliper	100.00	
4 to 5 in. caliper	125.00	
5 to 6 in. caliper	160.00	

LARGE SPECIMEN TREES

	1 to 9 Each	10 & up Each
TILIA tomentosa		Silver Linden
4 to 5 in. caliper	125.00	
5 to 6 in. caliper	160.00	
ULMUS americana		American Elm
3 to 3½ in. caliper	60.00	
3½ to 4 in. caliper	80.00	
4 to 5 in. caliper	110.00	
5 to 6 in. caliper	135.00	
6 to 7 in. caliper	160.00	
7 to 8 in. caliper	200.00	
8 to 10 in. caliper	250.00	
10 to 12 in. caliper	350.00	
ULMUS americana moline		Moline Elm
3 to 3½ in. caliper	60.00	
3½ to 4 in. caliper	80.00	
4 to 5 in. caliper	110.00	
5 to 6 in. caliper	135.00	
6 to 7 in. caliper	160.00	
ULMUS americana urni		Vase Elm
3 to 3½ in. caliper	60.00	
3½ to 4 in. caliper	80.00	

FLORIBUNDA ROSES

Dormant—for early planting
 \$1.25 each \$12.00 doz..... (except as noted)
 Potted—for late planting
 \$.50 each additional to price of dormant Roses.

Gloria Mundi.....	Orange-Scarlet
Goldilocks.....	Rich Golden Yellow
Improved Lafayette.....	Deep Glowing Red
Permanent Wave.....	Brilliant Red With Wavy Petaled Flowers
Pinocchio.....	Rich Salmon, Flushed With Gold
Paulson's Yellow.....	Yellow Semi-Double
Red Pinocchio.....	Rich Carmine
Red Ripples.....	Bud and Flowers True Red
Worlds Fair.....	Velvety Rich Scarlet
Betty Prior (\$1.35 each).....	Shell Pink
Donald Prior (\$1.35 each).....	Semi-double Brilliant Red
Else Poulsen.....	Bright Rose-Pink
Fashion.....	Luminous Coral Pink
Floradora.....	Brilliant Cinnabar-red

CLIMBERS

American Beauty.....	Rich Red to Crimson
Crimson Rambler.....	Vivid Scarlet
Golden Glow.....	Fragrant Yellow
King Midas.....	Golden Yellow
Paul's Scarlet.....	Vivid Scarlet

ROSES

Hybrid Tea — Bloom All Season

Price on First Quality Northern Grown Plants

Dormant—for early planting

\$1.25 each\$12.00 doz..... (except as noted)

Potted—for late planting

\$.50 each additional to price of dormant Roses.

American Beauty.....	Deep Rose-pink
Ami Quinard.....	Coppery Scarlet
Betty Uprichard.....	Salmon Pink
Charlotte Armstrong (\$1.65 each).....	Deep Cerise
Christopher Stone.....	Scarlet Overlaid Crimson
Condessa de Sagato.....	Oriental Red and Yellow
Countess Vandal (\$1.35 each).....	Copper on Salmon with Yellow
Crimson Glory (\$1.35 each).....	Deep Velvety Crimson
Diamond Jubilee (\$2.00 each).....	Buff Orange
E. G. Hill.....	Dazzling Scarlet
Editor McFarland.....	Glowing Pink Slightly Yellow
Ernie Pyle (\$1.50 each).....	Warm Rose-Pink
Etoile de Hollande.....	Bright Red
Fantasia (\$1.50 each).....	Cream-Yellow
Forty-Niner (\$2.00 each).....	Bicolor Chrome-Yellow and Red
Frau Karl Druschki.....	Snow White
Gruss an Teplitz.....	Glowing Pink Slightly Yellow
Joanna Hill.....	Orange Yellow
K. A. Victoria.....	Fragrant Creamy White
Lowell Thomas (\$1.50 each).....	Clear Canary Yellow
Mary Margaret McBride (\$1.50 each).....	Deep Salmon Pink
McGredy's Scarlet.....	Velvety Crimson Scarlet
Mme. Jules Bouche.....	White Center Shaded Pale Blush
Mrs. P. S. Dupont.....	Golden Yellow
Mrs. E. P. Thom.....	Clear Deep Canary Yellow
New Yorker (\$2.00 each).....	Scarlet with Rich Velvety Sheen
Peace (\$2.00 each).....	Fragrant Lemon-Yellow Good Foliage
Pink Radiance.....	Brilliant Rose Pink
Poinsettia.....	Scarlet-Red
President Hoover.....	Varying Orange Yellow
Rose of Freedom (\$1.75 each).....	Bright Rose Red
Rubaiyat (\$1.50 each).....	Large Rose-Red Bloom
San Fernando.....	Vermillion Scarlet
Sister Therese.....	Rich Yellow
Sutters Gold (\$2.25 each).....	Orange Through Yellow
Talisman.....	Golden Yellow to Copper Red
Texas Centennial.....	Bright Vermillion Red
The Doctor.....	Large Satiny Pink
White Briarcliff.....	Pure White
W. C. Miller.....	Soft Pearly Pink Shaded Salmon

TRIOGEN ROSE FOOD

A 5-10-5 Rose Food made from organic (long lasting) and inorganic (quickly available) materials: 5 units of nitrogen to given healthy green foliage; 10 units of phosphorus for healthy sturdy plants and roots; 5 units of potash for bigger and better flowers.

Also contains the essential minor elements necessary to plant growth. In addition, it contains Hormones and Vitamin B 1 which act as a stimulant and give a quick and increased root system. It is so compounded that plants will receive food at once as well as throughout the season.

5 lb. Bag.....	\$1.00	25 lb. Bag.....	\$3.00
10 lb. Bag.....	1.60	50 lb. Bag.....	5.00
100 lb. Bag.....			\$8.50

FRUITS — BERRIES — ASPARAGUS

APPLES:

Baldwin—11/16" - 1¼ to 1½" - 1½ to 2"	red winter apple
Banana—11/16" - 1¼ to 1½"	yellow with red cheek—winter
Cortland—11/16" - 1 to 1¼" - 1½ to 2"	red winter
Delicious—(dark red)—11/16" - 1¼ to 1½"	red winter
Delicious—(yellow)—11/16" - 1½ to 2"	golden winter
Duchess—11/16" - 1¼ to 1½"	yellow with red stripes—autumn
Grimes Golden—11/16" - 1¼ to 1½"	yellow late fall
Jonathan—11/16" - 1¼ to 1½" - 1½ to 2"	red winter
McIntosh—11/16" - 1¼ to 1½" - 1½ to 2"	red late fall
Northern Spy—11/16" - 1¼ to 1½"	red winter
Red Astrachan—11/16" - 1¼ to 1½"	red summer apple
Rome Beauty—11/16" - 1¼ to 1½"	red late winter
Stayman Winesap—11/16 - 1¼ to 1½"	red winter
Wealthy—11/16" - 1¼ to 1½" - 1½ to 2"	red fall
Whitney Crab—11/16" - 1¼ to 1½"	red fall
Yellow Transparent—11/16 - 1½ to 2"	yellow

Prices on Apple Trees

11/16" caliper — 5 to 7 ft. tall — 1.25 each	
10 for \$10.00	100 for \$90.00
7/8" to 1" caliper	2.25 each — 10 for 20.00
1" to 1¼" caliper	bearing size 3.25 each — 10 for 30.00
1¼" to 1½" caliper	bearing size 5.00 each — 10 for 45.00
1½" to 2" caliper	bearing size 7.50 each — 10 for 65.00

Note: We can also furnish larger bearing trees dug from our young bearing orchard near Prospect.

PEACHES:

Bell of Georgia	9/16"	white freestone
Elberta	9/16"	yellow freestone
J. H. Hale	9/16"	largest yellow freestone
Hale Haven	9/16"	yellow freestone
Red Haven	9/16"	yellow freestone
Rochester	9/16"	yellow freestone

Prices on Peach Trees

9/16" caliper—4 to 6 ft. tall	1.00 each — 10 for 8.00
-------------------------------	-------------------------

PEARS:

Bartlett	11/16" caliper	golden—favorite of many
Clapp's Favorite	11/16" caliper	large yellow
Duchess	11/16" caliper	good for home garden
Kieffer	11/16" caliper	late hard pear
Seckel	11/16" caliper	small sweet pear

Prices on Pear Trees

11/16" caliper	1.75 each — 10 for \$15.00
1" to 1¼" caliper	3.00 each — 10 for 25.00

PLUMS:

Burbank	11/16" caliper	cherry red sweet
Italian Prune	11/16" caliper	dark purple freestone late
Lombard	11/16" caliper	red mid-season

Prices on Plum Trees

11/16" caliper	1.75 each — 10 for \$15.00
1" to 1¼" caliper	3.00 each — 10 for 25.00

FRUITS — BERRIES — ASPARAGUS

SWEET CHERRIES:

- Bing.....11/16" caliper.....deep red—very large
- Black Tatarian.....11/16" caliper.....purplish black—large
- Napoleon.....11/16" caliper large yellow—red cheek

Price On All Sweet Cherries

11/16 inch caliper 2.25 10 for \$20.00

SOUR CHERRIES:

- Montmorency..... 11/16 in caliper.....large red
- Montmorency..... 1 in caliper.....large red

Prices on Sour Cherries

11/16 inch caliper 2.00 each 10 for \$18.00
 1¼ to 1½ inch caliper 5.00 each 10 for 45.00

GRAPES:

- Brighton.....a good early red
- Caco.....red mid-season large
- Concord.....mid-season blue large—popular
- Moore's Early.....early dark blue sweet
- Niagara.....white large sweet mid-season
- Worden.....blue earlier than Concord sweet

Prices on Grapes

2 yr. No. 150 each 10 for \$4.00
 3 yr.90 each 10 for 7.50

ASPARAGUS:—Rust Resistant—Pedigree.

Mary Washington—2 year No. 1

10 for 1.00 25 for 2.00 100 for 5.75

BLACKBERRIES:

Eldorado the most popular blackberry. Large jet black fruit.

10 for 1.75 25 for 3.50 100 for 9.90

BLUEBERRIES:—cultivated - hybrid

- Cabot.....early large heavy bearing
- Jersey.....late strong and heavy large fruit—fine flavor
- Rubel mid-season—medium to large fruit—heavy production
- Concord.....upright grower—large fine flavored
- Rancocas.....early upright good producer excellent flavor

Price on All Blueberries

18 to 24 in. B&B 2.25 each 10 for 20.00
 2 to 3 ft. B&B 3.25 each 10 for 30.00
 3 to 4 ft. B&B 4.25 each 10 for 40.00

(Last two are heavy bearing size plants that will produce fruit the first season.)

RED RASPBERRIES:

- Indian Summer.....Bears from July to mid-October
- Latham.....early July—commercial variety
- Chief.....Red earlier than Latham—fine flavor

Price on Red Raspberries

10 for 1.75 25 for 3.50 100 for 9.90

BLACK RASPBERRIES:

- Cumberland.....early July—large firm black berries
- New Morrison.....extra large fruit—mid-season

10 for 1.75 25 for 3.50 100 for 9.90

STRAWBERRY PLANTS:

—Delivered Price of Strawberry Plants—

	25	50	100	250	500
Premier.....	1.25	2.25	3.25	6.00	11.00
Blakemore	1.25	2.25	3.25	6.00	11.00
Dunlap.....	1.25	2.25	3.25	6.00	11.00
Catskill.....	1.25	2.25	3.35	6.00	11.00
Big Joe.....	1.25	2.25	3.35	6.00	11.00
Red Star.....	1.25	2.25	3.35	6.00	11.00
Gem	2.25	4.00	6.50	12.00	22.00
Mastoden.....	2.25	4.00	6.50	12.00	22.00
Streamliner.....	3.00	5.00	9.00	17.00	32.00

FERTILIZERS

TOL-E-GRO

Organic Fertilizer, produced by the Sewage Disposal Division of the City of Toledo, Ohio, has these important advantages:—Rich in both mineral and organic materials. Entirely free from Weed Seeds. Promotes continuous plant growth. Increases length and depth of Roots. Will not burn grass or other plant life. Makes heavy soils more porous and supplies Humus for light soils. Pulverized for drilling and easy mixing with soils. Requires no complicated method of application.

Prices of Tol-e-Gro

25 lb. Bag			\$.95
80 lb. Bag			2.50
5 Bags—80 lbs. each	400 lbs.....		12.00
12 Bags—80 lbs. each	960 lbs.....		25.00
25 Bags—80 lbs. each	2000 lbs.....		45.00

Special rates to large users such as Golf Courses, Cemeteries and Athletic Fields.

AGRICULTURAL LIME

Raw ground limestone to correct acidity of soil.

Uses 15 to 20 pounds per 100 square feet.

80 lb. bag.....	\$.90	960 lbs.....	\$ 8.00
480 lb.....	4.50	2000 lbs.....	15.00

(Please ask for prices on larger quantities)

PEAT MOSS

Imported from Holland

Extra large bale.....	\$5.50	5 bales.....	5.00 each
-----------------------	--------	--------------	-----------

LAWNS AND GARDEN BONE MEAL

Especially adapted for lawns, gardens and greenhouses.

Nitrogen, 1.75 per cent; total Phosphoric Acid, 20 per cent.

5 lbs.....	\$.60	50 lbs.....	\$3.25
10 lbs.....	1.00	100 lbs.....	5.50
25 lbs.....	2.00	500 lbs.....	25.00

INSECTICIDES

TRIOGEN

Rose garden spray treatment. Used by leading Rosarians. Triogen Spray gives protection against certain insects and diseases, including black-spot, mildew, aphids, etc. It is especially recommended for roses, asters, snapdragons, hollyhocks, phlox, delphiniums, dahlias, and many other plants. The stimulating value of Triogen promotes vigor and growth, healthy green foliage, with resultant luxuriant blooms.

Protects for Season

E. Kit.....	6 to 10 roses.....	\$ 1.35
A. B. Medium Kit.....	12 to 20 roses.....	2.25
B. Medium Kit.....	50 to 80 roses.....	6.00
C. Large Kit.....	100 to 160 roses.....	9.00
D. Estate Kit.....	400 to 600 roses.....	30.00

We pay transportation costs on Triogen anywhere in U.S.A.

LAWN SEED

O. M. SCOTT and SONS COMPANY MARYSVILLE, O.

Note: We are exclusive Butler County Distributors for Scott's Lawn Care Products and carry a complete line. All prices listed are delivered prices to you. We make deliveries daily in Butler and a couple times a week in the other parts of Western Pennsylvania.

SCOTT'S LAWN SEED

Top quality blend of permanent grasses for open sunny or lightly shaded lawns. Triple clean, 99.91% weed-free. Rate 4 to 6 lbs. per 1000 sq. ft.

1 lb.	\$ 1.55	25 lbs.	\$ 36.50
5 lbs.	7.65	50 lbs.	2/25 lbs. 73.00
10 lbs.	2/5 lbs. 14.95	100 lbs.	4/25 lbs. 145.00
	500 lbs.	20/25 lbs. \$	685.00

SCOTT'S SPECIAL PURPOSE BLEND

Formerly Scott's Dense Shade, recommended for such locations, also for poor dry soils, terraces, playgrounds and other areas where growing conditions are not good and rugged turf is desired.

1 lb.	\$ 1.25	50 lbs.	2/25 lbs. 59.00
5 lbs.	6.15	100 lbs.	4/25 lbs. 115.00
10 lbs.	2/5 lbs. 11.95	500 lbs.	20/ lbs. 545.00
25 lbs.	\$ 29.50		

SCOTT'S BENTGRASS SEED

Makes velvety home lawns like putting greens in full sun, light shade. Sow separately or mix with other Scott's Seed. Rate:—2 or 3 lbs. per 1000 sq. ft.

1 lb.	\$1.95	5 lbs.	\$9.35	25 lbs.	5/5 lbs. \$44.85
------------	--------	-------------	--------	--------------	------------------

SCOTT'S CLOVER

Finest quality high germination seed. Not included in Scott mixture as it is better sown alone. Small box seeds 2000 sq. ft.—large box 5000 sq. ft.

9 oz. box	\$.95	20 oz. box	\$1.95
-----------------	--------	------------------	--------

SCOTT'S TURF BUILDER

This complete grassfood keeps turf healthy, vigorous and sparkling green. Use 10 lbs. per 1000 sq. ft. Clean, no offensive odor before or after use.

10 lbs.	\$1.35	100 lbs.	2/50 lbs.	\$ 7.85
25 lbs.	2.50	500 lbs.	10/50 lbs.	35.00
50 lbs.	3.95	2000 lbs.	40/50 lbs.	125.00

Dry compound that kills weeds as it feeds grass. Easy spreader application. Destroys Plantain, Buckthorn, Dandelion, all broadleaved weeds, while stimulating turf to thicker growth, richer color.

Small box	500 sq. ft.	\$ 1.00
Large box	2,500 sq. ft.	2.95
Triotex Bag	11,000 sq. ft.	11.75
10 Bags	2½ Acres	99.50
50 Bags	12½ Acres	437.50

SCOTT'S PEST CONTROL

Easily applied dry compound that rids lawns of Jap Beetle, Grubs, Chinch Bugs, Chiggers, Ants. Non-poisonous.

Small box	500 sq. ft.	\$.95
Large box	2,500 sq. ft.	3.50
Bag	11,000 sq. ft.	12.75
10 Bags	2½ Acres	107.50
50 Bags	12½ Acres	492.50

SCOTT'S 4XD WEED CONTROL

Spray applied control for all non-grass weeds. A concentrated powder in convenient packets.

Small Box.....	500 sq. ft.....	\$.49
Large Box.....	2500 sq. ft.....	1.75
Bag.....	11,000 sq. ft.....	4.85
10 Bags.....	2½ Acres.....	39.50
50 Bags.....	12½ Acres.....	180.00

SCUTL—CRABGRASS CONTROL

This newest Scott's development stops growth of Crabgrass (also known as wire-grass, watergrass, fall grass, finger grass) without injury to desirable grasses. Dry compound, quickly applied with a spreader.

Small Box.....	\$.65	Large Bag, No. 110.....	\$ 8.75
Large Box.....	1.45	8 Large Bags.....	62.50
Bag, No. 55.....	4.85	40 Large Bags.....	275.00

SCOTT'S SPREADERS

Precision machines for quick, accurate seeding, feeding, weeding. Rate and shutoff control on handle. Rubber tired.

JUNIOR Spreader.....	\$ 6.45
No. 25.....	Medium Lawn Size, 16 inch spread..... 10.85
No. 50.....	Suburban Size, double capacity..... 19.50
No. 100.....	Estate, Professional Size, 36 inch..... 44.50

LAWN CARE BOOKS

Digest of earlier issues assembled in convenient paper file or looseleaf binder.

Paper Bound Files.....	\$.25
Loose-Leaf Binder.....	1.00

LOWER PRICED LAWN SEED

HAVEN GRASS SEED

A good lower priced seed containing over 50% of Kentucky Blue Grass.

1 lb.....	\$.98	5 lbs.....	\$4.95	25 lbs.....	\$23.75
-----------	--------	------------	--------	-------------	---------

THRIFTEE GREEN

A low priced lawn seed for producing bright green lawn in a hurry. A value that will stand out.

1 lb.....	\$.59	5 lbs.....	\$2.79	25 lbs.....	\$13.45
-----------	--------	------------	--------	-------------	---------

SHADY LAWN GRASS SEED

A special shady spot lawn seed that will produce a green turf in places where the sun does not shine.

1 lb.....	\$.98	5 lbs.....	\$4.95	25 lbs.....	\$23.75
-----------	--------	------------	--------	-------------	---------

HUMUS

EISLER'S HUMUS

This is a fine grade of Peat Humus produced in Mercer County. It is a splendid conditioner and acts as a sponge in retaining moisture in the soil. Use it as a top dressing or mix it with your soil in preparing a seed bed. It is a splendid mulch for Rhododendrons, Ilex, Azaleas and Laurel. It lacks the fertilizing qualities of Mushroom Manure but is higher in organic content.

Price per cubic yard at our Nursery.....	\$6.50
1 bushel in your container (called for).....	.65
2 to 3 bushel bag—(called for).....	1.35

DELIVERED PRICES:

5 cubic yards—\$3.50 per cubic yard plus 20c per mile.
 10 cubic yards—\$3.50 per cubic yard plus 30c per mile.

(Mileage figured from plant in Mercer County)

Pittsburgh delivered price — 5 cubic yards — \$40.00

Pittsburgh delivered price — 10 cubic yards — \$65.00

For amount of humus, required please see table listed under Mushroom Manure.

SPENT MUSHROOM MANURE

Spent Mushroom Manure is real stable manure to which has been added 20% of rich top soil and then used to grow one crop of Mushrooms in the huge limestone caverns at West Winfield in Butler County. The heat of fresh manure is gone, but the organic content and fertility of good barnyard manure is retained.

The high organic content, almost five times that of top soil, is quite valuable in loosening heavy soils and increasing the moisture retention value. It is a long time source of mineral elements which are released gradually through decomposition into the soil.

New studies prove that organic plant foods such as Mushroom Manure are absolutely vital in growing crops for human consumption. They claim that vegetables grown without organic elements are almost valueless in supplying the needs of our body.

A two-inch layer of Spent Mushroom Manure mixed with clay excavation soil will produce a good lasting turf. This makes a much lower cost lawn than the hauling in of some low grade so-called top soil. This has been proven over and over again. It will produce a good lasting turf almost weedless.

For use on a vegetable, or flower garden we recommend from two to four inches spaded into the soil. A generous application will supply your garden with ample plant food for a long time. It loosens the soil, retains moisture and promotes growth. For mulching, or placing around any established plants, we recommend from one to two inches. For roses, it should be placed down in the bed on planting and then use some to mulch them every fall for winter protection. As a top-dressing for lawn either in the fall or winter, we recommend from 1/4 to 1/2 inch. It is also used by many gardeners to cover newly seeded lawns to keep them from drying out after seeding.

Spent Mushroom Manure lacks the filth, odor and disease spread in ordinary stable manure for it is sterilized before entering the Mushroom growing plant. This process also kills nearly all weed seeds found in ordinary barnyard manures.

The amount required to cover a given area is as follows:

one cubic yard will cover as follows

- 79 square feet to a thickness of 4 inches
- 108 square feet to a thickness of 3 inches
- 162 square feet to a thickness of 2 inches
- 324 square feet to a thickness of 1 inch
- 648 square feet to a thickness of 1/2 inch
- 1296 square feet to a thickness of 1/4 inch

Price at West Winfield — Butler County

R license plate truck.....	all you can haul.....	2.00
S license plate truck.....	all you can haul.....	3.00
T license plate truck.....	all you can haul.....	4.00
U license plate truck.....	all you can haul.....	6.00
V license plate truck.....	all you can haul.....	8.00
W license plate truck.....	all you can haul.....	10.00
Y license plate truck.....	all you can haul.....	12.00
Z license plate truck.....	all you can haul.....	14.00

We load large trucks with open beds, but small pickup trucks must be loaded by driver of truck from our stockpile at West Winfield.

DELIVERY: We deliver to any part of Western Pennsylvania and will be pleased to quote a delivered price to your town in full truck loads only. If you just want a few bushels, please call your local landscape gardener for nearly all of them have it on hand for resale. We also have it available at our Prospect Nursery, or at our Butler Office.

LANDSCAPE SERVICES—ESTIMATED COSTS

These costs may vary considerably depending upon the type of soil encountered, the size of the order and the distance from our nursery. These are approximate cost prices to be used as a guide only—large orders will bear a discount.

Unit Planting Cost of Dwarf and Spreading Type Evergreens: Furnished Balled and Burlapped.

Size of Plant	Size of Hole	Approximate Soil Required	Without Soil or Mulch	With new Soil and Mulch
12-18"	18"x12"	1/2 bu.	.60	\$.90
18-24"	20"x12"	3/4 bu.	.70	1.00
24-30"	22"x12"	3/4 bu.	.90	1.25
30-36"	24"x15"	1 bu.	1.10	1.50
3-4'	30"x15"	2 bu.	2.50	3.50
4-5'	42"x18"	5 bu.	3.50	5.00

Unit Planting Cost of Upright Evergreens and Balled and Burlapped Trees Furnished B&B by Nursery.

Size of Plant	Size of Hole	Approximate Soil Required	Without Soil or Mulch	With new Soil and Mulch
12-18"	18"x12"	1/2 bu.	\$.60	\$.90
18-24"	20"x12"	3/4 bu.	.70	1.00
2-3'	24"x15"	1 bu.	1.10	1.50
3-4'	28"x18"	1 1/2 bu.	1.50	2.00
4-5'	32"x18"	2 bu.	2.00	2.50
5-6'	36"x18"	3 bu.	3.00	4.00
6-8'	42"x22"	6 bu.	4.00	5.50
8-10'	48"x24"	10 bu.	10.00	15.00
10-12'	54"x24"	15 bu.	15.00	22.50

Unit Planting Cost of Shrubs and Small Trees Furnished Bare Roots from Nursery. This includes Fruit Trees.

Size of Plant	Size of Hole	Approximate Soil Required	Without Soil or Mulch	With new Soil and Mulch
15-18"	15"x12"	1/4 bu.	\$.40	\$.75
18-24"	18"x12"	1/2 bu.	.50	.90
2-3'	18"x15"	3/4 bu.	.60	1.10
3-4'	18"x18"	1 bu.	.70	1.25
4-5'	24"x18"	1 1/4 bu.	.85	1.50
5-6'	28"x18"	1 1/2 bu.	1.00	1.75

Unit Planting Cost of Shade Trees Dug Bare Root at the Nursery. Guying included if necessary.

Size of Plant	Size of Hole	Approximate Soil Required	Without Soil or Mulch	With new Soil and Mulch
6-8'	30"x18"	3 bu.	\$ 2.50	\$ 3.50
8-10'	32"x18"	4 bu.	3.50	5.00
10-12'	36"x18"	6 bu.	4.50	6.00
1 1/2-2"	38"x18"	7 bu.	6.00	7.50
2-2 1/2"	40"x24"	9 bu.	8.00	9.50
2 1/2-3"	44"x24"	12 bu.	10.00	12.00
3-3 1/2"	48"x24"	15 bu.	13.00	16.00
3 1/4-4"	52"x24"	20 bu.	18.00	22.00

NOTE: Where planting costs are marked "without soil" indicates that top soil is available to us on the site at no cost, while ones marked "with soil" indicates that we will furnish all soil necessary for proper planting.

LANDSCAPE SERVICE COSTS

Unit Planting Cost of Roses and Vines

Planting and pruning in original soil.....	.60
Planting in new soil furnished and mulched.....	.90

Unit Planting Cost of Hedges including Pruning When Planted

No new soil or mulch—per lineal foot.....	\$.50
New soil and manure in trench also mulch— per lineal foot.....	.90

Unit Planting Cost of Ground Cover Plants

To plant when bed is completely prepared.....	\$.05
To prepare bed by digging in 2" of humus or manure	.15
To prepare bed by excavation 6" deep and supplying new soil and manure.....	.30

CONSTRUCTION OF DRY STONE WALLS:

Stone furnished and laid in place measurement in- cludes face of footer per square foot of face.....	\$2.35
---	--------

CONSTRUCTION COST OF WALKS, STONE TERRACE and STEPS:

Terrace or walks per square foot laid on sand, cinder or slag base.....	\$1.35
Terrace, or walks per square foot laid with no base except original soil.....	\$1.00
Stone steps—price per lineal foot of tread.....	4.00

COST OF FERTILIZING LAWNS

Fertilizer furnished by us and applied with spreader.

Growell, Agrico or Vigoro.....	\$ 7.00 per 100 lbs.
Scott's Turf Builder.....	10.00 per 100 lbs.
200 to 5000 lbs.....	less 10% per 100 lbs.
500 lbs. and over.....	less 15% per 100 lbs.

SPRAYING

We have two large power sprayers and do custom spraying in season using the new and more effective types of insecticides and fungicides.

10 to 50 gallon of solution applied.....	@ \$.23 per gallon
50 to 100 gallon of solution applied.....	@ \$.21 per gallon
100 to 500 gallon of solution applied.....	@ \$.19 per gallon
500 gallon and up of solution applied.....	@ \$.17 per gallon

LANDSCAPE SERVICE COSTS

Lawn Construction:

Dug up with hand, or power tillers, fertilized, limed, hand raked, seeded with good lawn seed and rolled.

LAWNS OF:

100 to 300 square feet	\$.08 per sq. ft.
300 to 10,000 square feet	\$.07 per sq. ft.
10,000 to 20,000 square feet	\$.06½ per sq. ft.
Over 20,000 square feet.....	\$.06 per sq. ft.

The above prices include all labor and material except top soil. The results are not guaranteed. If you wish a guaranteed lawn, we will water until germination and cut it for the first cutting for an additional \$.02½ per square foot of area.

FLAGSTONE:

Sawed flagstone, 1½ inch thick.....	\$.60 per square foot
Cleft flagstone, 1 to 2 inches thick.....	.50 per square foot

SCHEDULE OF B&B CHARGES

When a plant is marked B&B the cost of balling is included in the listed price. If balling is requested on plants not so marked the charge will be as follows:

18 to 24 in	\$.75
2 to 3 ft.	1.10
3 to 4 ft.	1.50
4 to 5 ft.	1.90
5 to 6 ft.	2.25

		Diameter of Ball
6 to 8 ft. Shrubs or 1 " Trees.....	3.00	16 in.
8 to 10 ft. Shrubs or 1 1/4" Trees.....	4.25	18 in.
1 1/2 in. Trees.....	5.50	20 in.
1 3/4 in. Trees.....	7.50	22 in.
2 in. Trees.....	9.00	24 in.
2 1/2 in. Trees.....	13.50	30 in.
3 in. Trees.....	22.50	36 in.
3 1/2 in. Trees.....	32.50	42 in.
4 in. Trees.....	45.00	48 in.
4 1/2 in. Trees.....	65.00	54 in.
5 in. Trees.....	90.00	60 in.

— INDEX —

Andromeda	3
Azaleas	1-2
Buddleia	11
Daphne	2
Evergreens	5-10
Fertilizer	43-44
Flowering Shrubs	10-23
Fruit Trees	41-42
Hedge—Barberry	10-11
Hedge—Privet	15-16
Hemlock	10
Holly	2-3
Humus	45
Junipers	5-6
Large Trees	37-40
Laurel	3
Lawn Seed.....	44-45
Leucothoe	3
Lilacs	19-20
Mushroom Manure.....	46
Pyracantha	3
Rhododendron	4
Roses	39-40
Shade Trees	25-36
Vines and Ground Cover.....	36-37
Yews	8-9

How to Reach the
EISLER NURSERIES

